

## Census 2011: Who we are

The data in this section covers the characteristics of the usually resident population<sup>1</sup> in Cotswold District, and the personal characteristics of the residents who live here including our general health, whether we had an illness or disability that limited our day to day activities, our ethnicity, whether or not we were born in the UK, what passports we held and our language skills, and our religious beliefs.

### Population

On the 27<sup>th</sup> March 2011, there were 82,881 usual residents; a 3.1% increase over the decade (80376, Census 2001). Over the same period, the population in Gloucestershire grew by 5.7% and by almost 8% in England and Wales

51.6% of usual residents were female (42777) and 48.4% (40104) were male (females - Gloucestershire (51%), and England and Wales (50.8%))

In E & W, the percentage of the population aged under 5 years grew slightly over the decade (from 5.9% to 6.2%); while this group decreased in the District from 5.5% to 4.7% of the resident population

In 2001, one in five (20%) of the population was 65 and over, increasing to 22.3% in 2011

Over the decade, the greatest changes were seen in the 60-64 age group which increased by 2.4 percentage points, while the 30-34 age group decreased by 2.2 percentage points

The mean age was 44.2 years compared to Gloucestershire (41.3 years), the South-west (41.6 years) and England and Wales (39.4 years). The median age was 46 years compared to Gloucestershire and South West (both 42 years), and E & W (39 years). The higher median age reflects the older population in this District

The mean age in 2001 was 41.9 years and the median age was 42 years

There were 36,236 households in the District, a 5.3% increase over the decade, with an average household size of 2.2 persons (Gloucestershire and the South-West (both 2.3 persons, England & Wales (2.4))

### Ethnicity, birthplace, household language & religion

Most usual residents belonged to the White ethnic group (97.8%) in 2011, one percentage point lower than 2001. The majority of these belonged to the White British group (95.1), 1.5 percentage points lower than 2001. In comparison, Gloucestershire, the SW and E&W showed a much greater decrease in the White British group (3.2 percentage points, 3.6 percentage points, and 7 percentage points respectively)

In 2011, the majority of residents were born in England (88.6%); the next largest group was Other countries (not EU) at 4.2%.

In 97.4% of households, all members aged 16 and over had English as their main language; while in 1% of households, no members in the household had English as a main language (356 residents)

---

<sup>1</sup> A usual resident of the UK is anyone who, on census day, was in the UK and had stayed or intended to stay in the UK for a period of 12 months or more, or had a permanent UK address and was outside the UK and intended to be outside the UK for less than 12 months.

The order of the main religion groups by size was almost identical between 2001 and 2011. Those affiliated with the Christian religion remained the largest group; 68.7% of usual residents (rank<sup>2</sup> within E & W = 48), a decrease of 11.4 percentage points since 2001 when 80.1% stated their religion as Christian; aside from the Sikh religion (decreased from 20 to 7 people), this is the only other group to have experienced a decrease in numbers between 2001 and 2011

The second largest category in 2011 was no religion which increased 10 percentage points from 12.9% of usual residents in 2001, to 22.9% in 2011

### Health

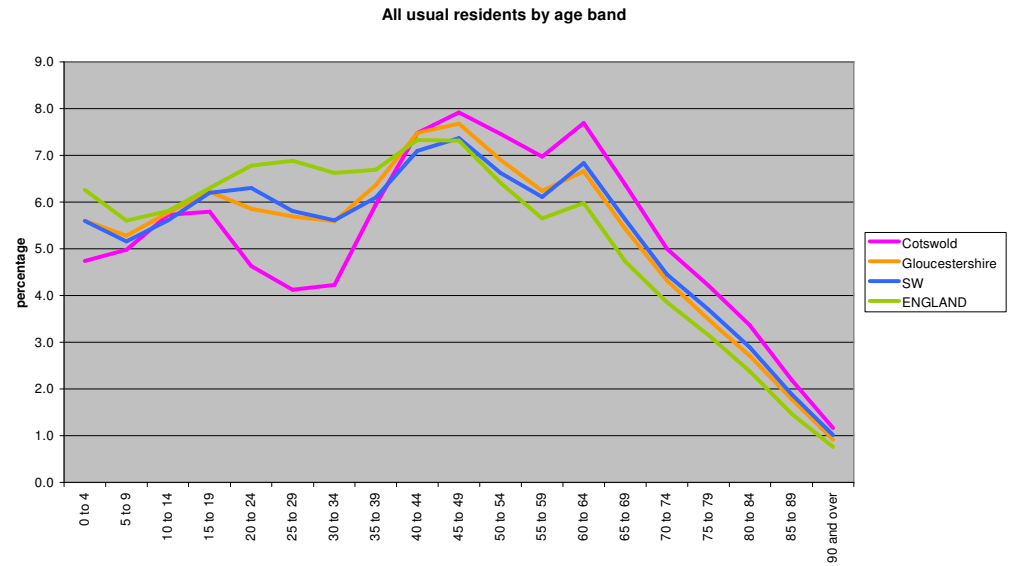
The proportion of residents in good health was largely unchanged (83.9% in 2011, 83.7% in 2001), with 6.5% of residents stating that day to day activities were limited a lot, and 9.6% limited a little

Over the decade there was little change in the percentage of residents reporting that day-to-day activities were limited.

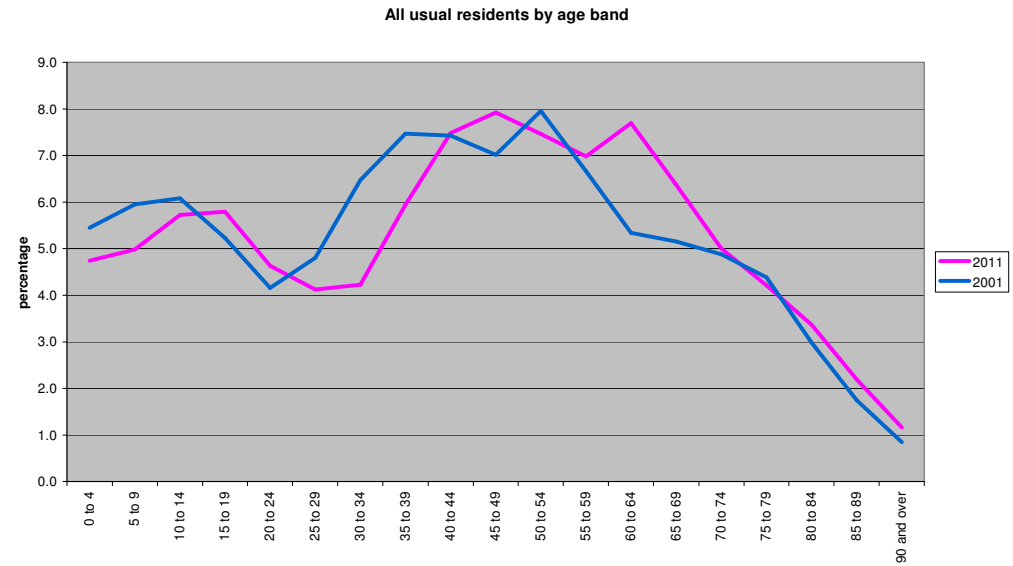
---

<sup>2</sup> ONS has ranked each district and unitary authority within England and Wales, the ranks are based on percentages, the highest percentage receives a rank of 1, and the lowest a rank of 348

2011 Census: PP04 All usual resident population (counts)					
	Cotswold	Gloucestershire	SW	ENGLAND	E & W
All ages	82881	596984	5288935	53012456	56075912
0 to 4	3929	33438	296094	3318449	3496750
5 to 9	4126	31540	272689	2972632	3135711
10 to 14	4746	34479	296892	3080929	3258677
15 to 19	4801	37131	328077	3340265	3539385
20 to 24	3837	34958	333166	3595321	3807245
25 to 29	3416	33994	307159	3650881	3836609
30 to 34	3502	33384	296791	3509221	3683915
35 to 39	4926	37985	322364	3549116	3732161
40 to 44	6201	44670	375538	3885934	4099089
45 to 49	6564	45835	389583	3879815	4100526
50 to 54	6182	41219	350433	3400095	3601694
55 to 59	5783	37257	323198	2996992	3183915
60 to 64	6379	39739	361507	3172277	3377162
65 to 69	5280	32393	297440	2508154	2674161
70 to 74	4146	25817	235462	2044129	2178672
75 to 79	3492	20823	195666	1669345	1777547
80 to 84	2789	16153	153093	1258773	1338005
85 to 89	1816	10671	99900	776311	825671
90 to 94	746	4272	41548	313722	333455
95 to 99	194	1102	10843	79519	84376
100 and over	26	124	1492	10576	11186
Under 16	13743	106751	929678	10022836	10579132
Under 18	15744	122225	1058613	11336960	11970367
16 to 44	25741	214828	1899092	20879912	22010410
45 to 64	24908	164050	1424721	13449179	14263297
65 and over	18489	111355	1035444	8660529	9223073



2011 Census: PP04 All usual resident population (percentages)					
	Cotswold	Gloucestershire	SW	ENGLAND	E & W
0 to 4	4.7	5.6	5.6	6.3	6.2
5 to 9	5.0	5.3	5.2	5.6	5.6
10 to 14	5.7	5.8	5.6	5.8	5.8
15 to 19	5.8	6.2	6.2	6.3	6.3
20 to 24	4.6	5.9	6.3	6.8	6.8
25 to 29	4.1	5.7	5.8	6.9	6.8
30 to 34	4.2	5.6	5.6	6.6	6.6
35 to 39	5.9	6.4	6.1	6.7	6.7
40 to 44	7.5	7.5	7.1	7.3	7.3
45 to 49	7.9	7.7	7.4	7.3	7.3
50 to 54	7.5	6.9	6.6	6.4	6.4
55 to 59	7.0	6.2	6.1	5.7	5.7
60 to 64	7.7	6.7	6.8	6.0	6.0
65 to 69	6.4	5.4	5.6	4.7	4.8
70 to 74	5.0	4.3	4.5	3.9	3.9
75 to 79	4.2	3.5	3.7	3.1	3.2
80 to 84	3.4	2.7	2.9	2.4	2.4
85 to 89	2.2	1.8	1.9	1.5	1.5
90 to 94	0.9	0.7	0.8	0.6	0.6
95 to 99	0.2	0.2	0.2	0.2	0.2
100 and over	0.0	0.0	0.0	0.0	0.0
Under 16	16.6	17.9	17.6	18.9	18.9
Under 18	19.0	20.5	20.0	21.4	21.3
16 to 44	31.1	36.0	35.9	39.4	39.3
45 to 64	30.1	27.5	26.9	25.4	25.4
65 and over	22.3	18.7	19.6	16.3	16.4



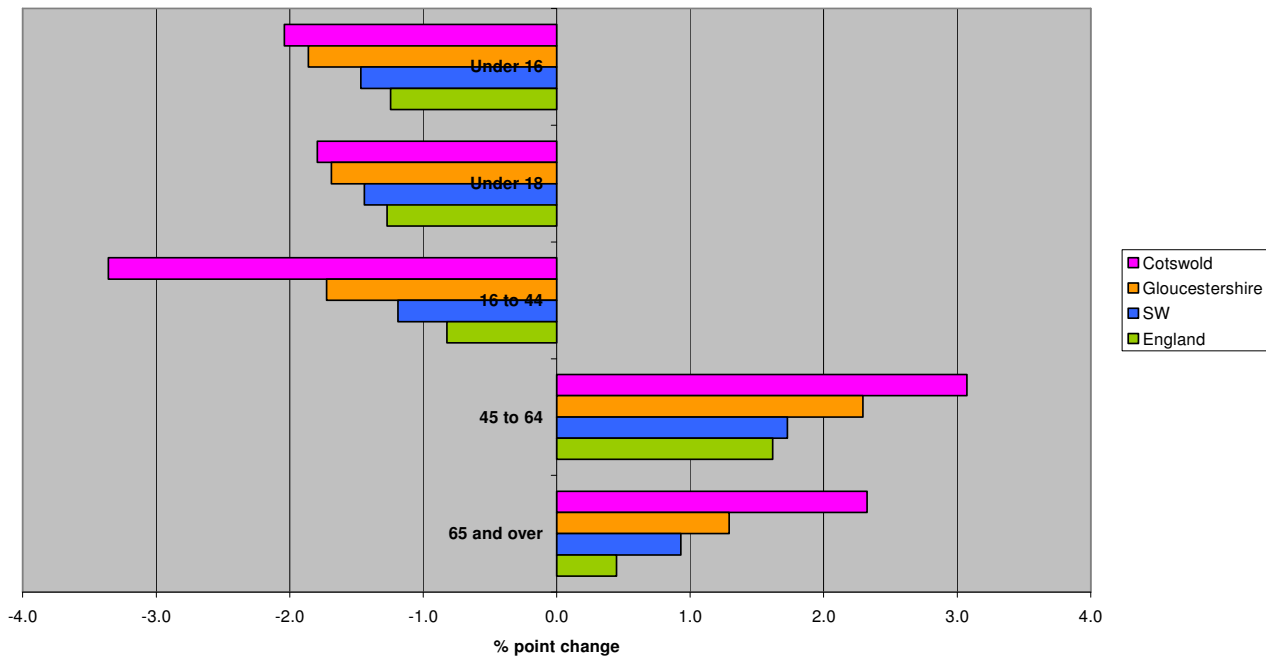
Based on All usual residents

Source: 2011 Census, Office for National Statistics © Crown Copyright 2012

2001 Census: UV04 Age (derived from single age counts)										
	Cotswold		Gloucestershire		SW		ENGLAND		E & W	
	%	% point chg	%	% point chg	%	% point chg	%	% point chg	%	% point chg
Under 16	18.6	-2.0	19.7	-1.9	19.0	-1.5	20.2	-1.2	20.2	-1.3
Under 18	20.8	-1.8	22.2	-1.7	21.5	-1.4	22.7	-1.3	22.7	-1.3
16 to 44	34.4	-3.4	37.7	-1.7	37.1	-1.2	40.2	-0.8	40.1	-0.8
45 to 64	27.0	3.1	25.2	2.3	25.2	1.7	23.8	1.6	23.8	1.6
65 and over	20.0	2.3	17.4	1.3	18.6	0.9	15.9	0.4	16.0	0.5

\*For display purposes, figures in this table have been rounded to one decimal point; graph is plotted on unrounded figures

Change over decade

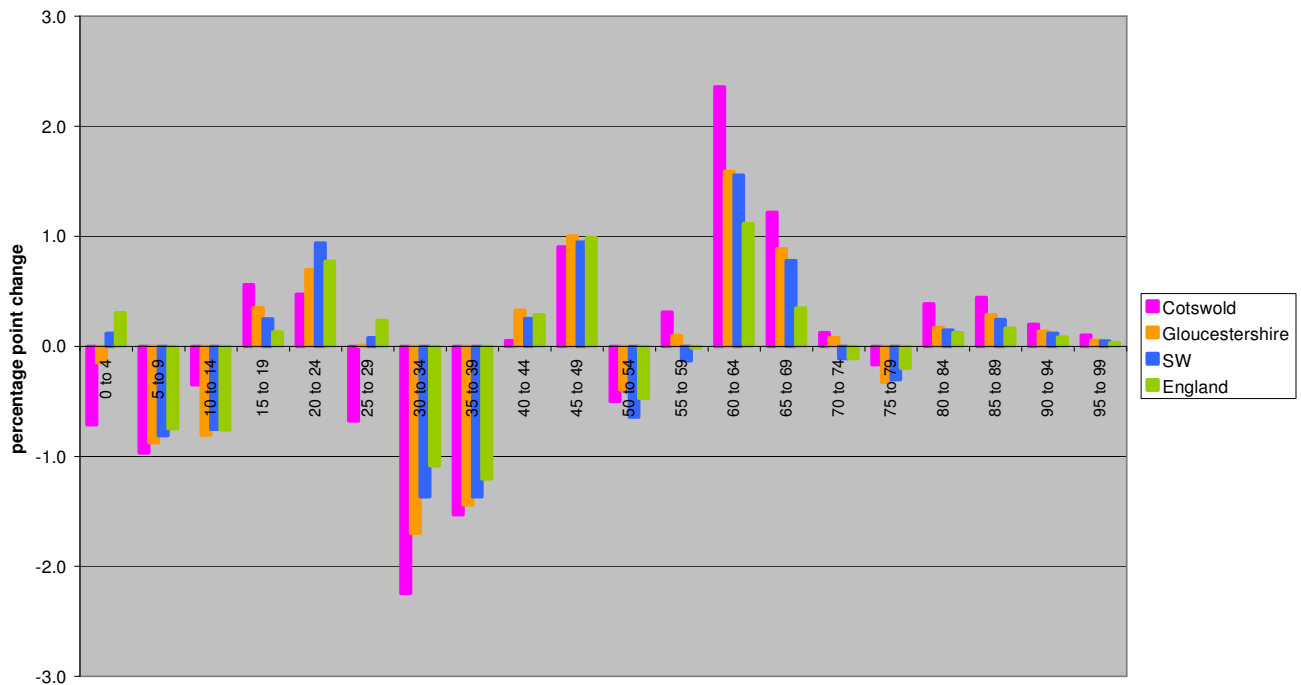


\*A usual resident of the UK is anyone who, on census day, was in the UK and had stayed or intended to stay in the UK for a period of 12 months or more, or had a permanent UK address and was outside the UK and intended to be outside the UK for less than 12 months.

**2001 Census: UV04 Age (derived from single age counts)**

	Cotswold		Gloucestershire		SW		ENGLAND		E & W	
	%	% point chg	%	% point chg	%	% point chg	%	% point chg	%	% point chg
0 to 4	5.5	-0.7	5.7	-0.1	5.5	0.1	6.0	0.3	5.9	0.3
5 to 9	5.9	-1.0	6.2	-0.9	6.0	-0.8	6.4	-0.7	6.4	-0.8
10 to 14	6.1	-0.4	6.6	-0.8	6.4	-0.8	6.6	-0.8	6.6	-0.8
15 to 19	5.2	0.6	5.9	0.4	6.0	0.2	6.2	0.1	6.2	0.1
20 to 24	4.2	0.5	5.2	0.7	5.4	0.9	6.0	0.8	6.0	0.8
25 to 29	4.8	-0.7	5.7	0.0	5.7	0.1	6.7	0.2	6.6	0.2
30 to 34	6.5	-2.2	7.3	-1.7	7.0	-1.4	7.7	-1.1	7.7	-1.1
35 to 39	7.5	-1.5	7.8	-1.4	7.5	-1.4	7.9	-1.2	7.9	-1.2
40 to 44	7.4	0.1	7.2	0.3	6.8	0.3	7.0	0.3	7.0	0.3
45 to 49	7.0	0.9	6.7	1.0	6.4	0.9	6.3	1.0	6.3	1.0
50 to 54	8.0	-0.5	7.3	-0.4	7.3	-0.6	6.9	-0.5	6.9	-0.5
55 to 59	6.7	0.3	6.1	0.1	6.2	-0.1	5.7	0.0	5.7	0.0
60 to 64	5.3	2.4	5.1	1.6	5.3	1.6	4.9	1.1	4.9	1.1
65 to 69	5.2	1.2	4.5	0.9	4.8	0.8	4.4	0.3	4.4	0.4
70 to 74	4.9	0.1	4.2	0.1	4.6	-0.1	4.0	-0.1	4.0	-0.1
75 to 79	4.4	-0.2	3.8	-0.3	4.0	-0.3	3.3	-0.2	3.4	-0.2
80 to 84	3.0	0.4	2.5	0.2	2.7	0.1	2.3	0.1	2.3	0.1
85 to 89	1.7	0.4	1.5	0.3	1.6	0.2	1.3	0.2	1.3	0.2
90 to 94	0.7	0.2	0.6	0.1	0.7	0.1	0.5	0.1	0.5	0.1
95 to 99	0.1	0.1	0.1	0.1	0.2	0.0	0.1	0.0	0.1	0.0

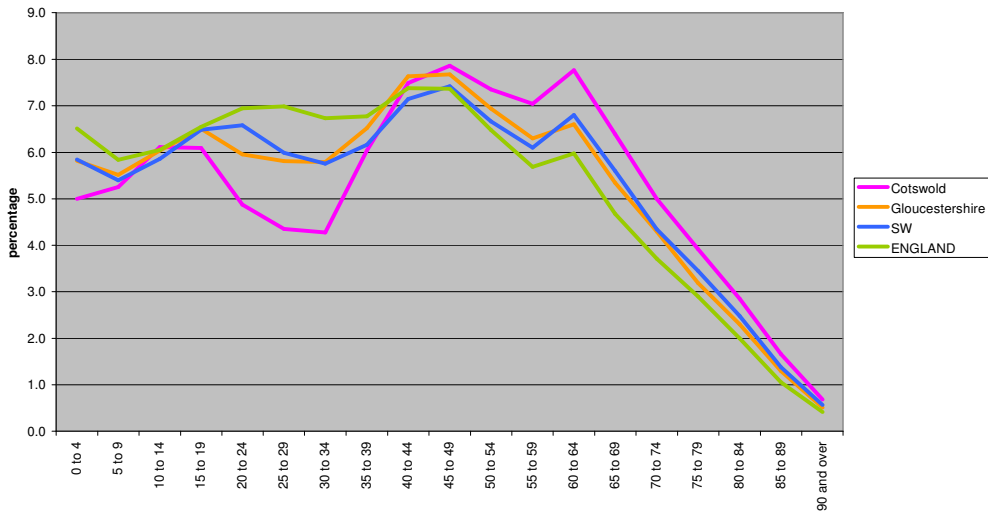
**Change over decade**



Source: 2001 Census, Office for National Statistics © Crown Copyright 2003

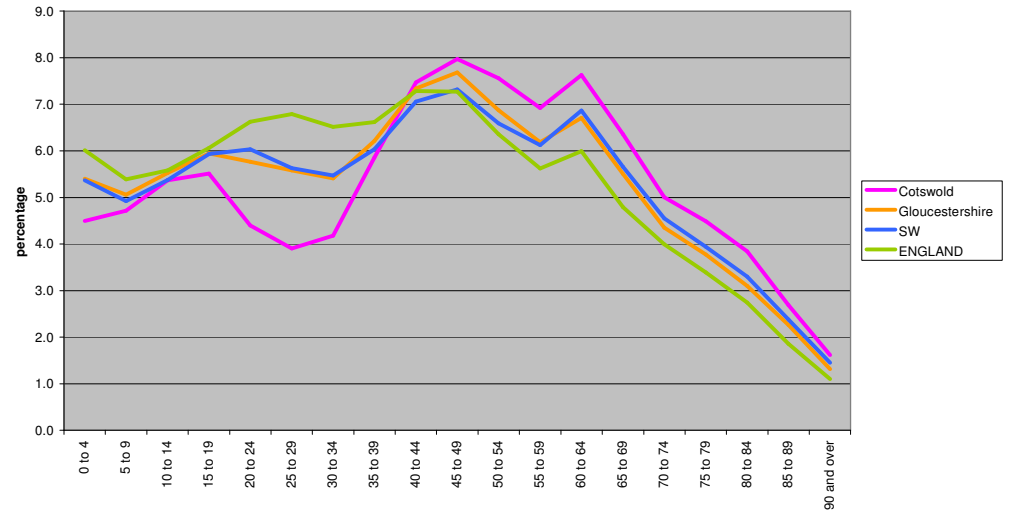
2011 Census: PP05 Male usual resident population

All male usual residents by age band

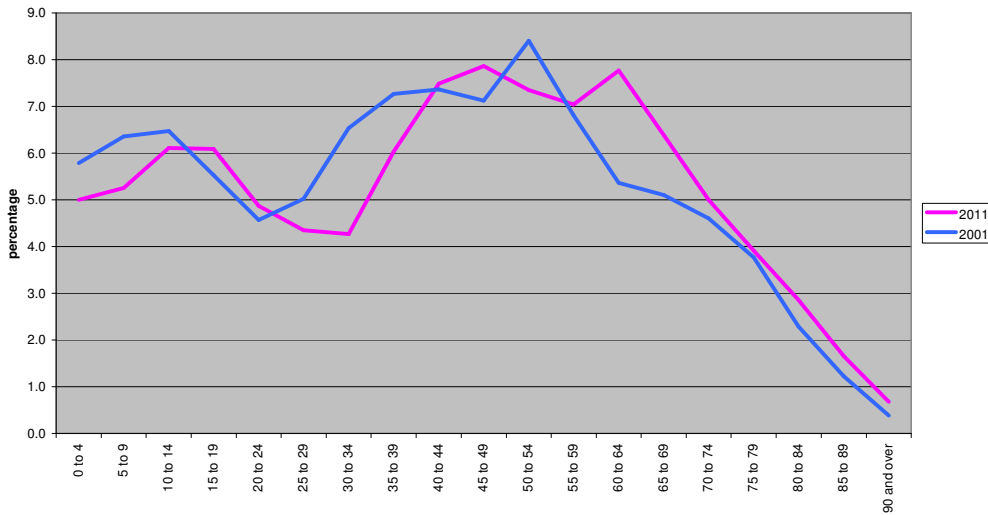


2011 Census: PP06 Female usual resident population

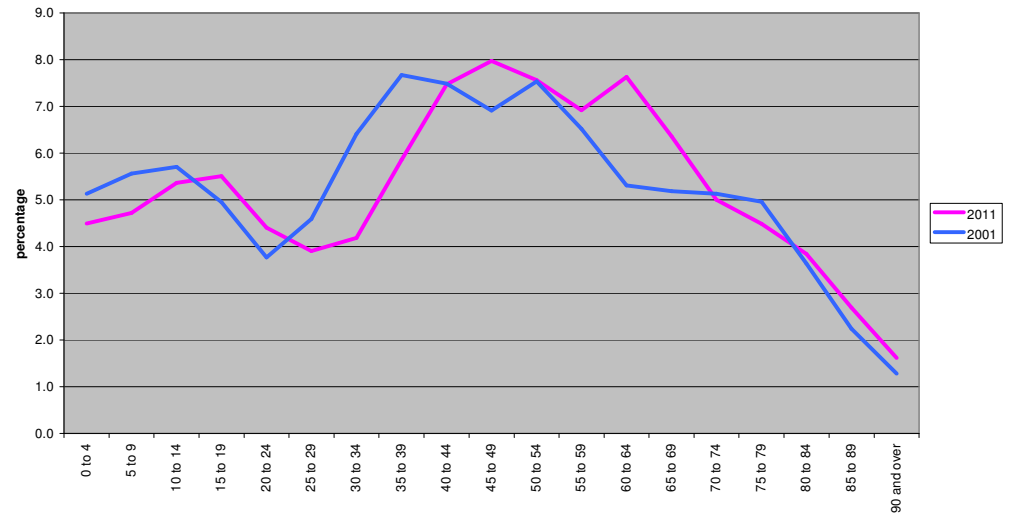
All female usual residents by age band



All usual male residents by age band

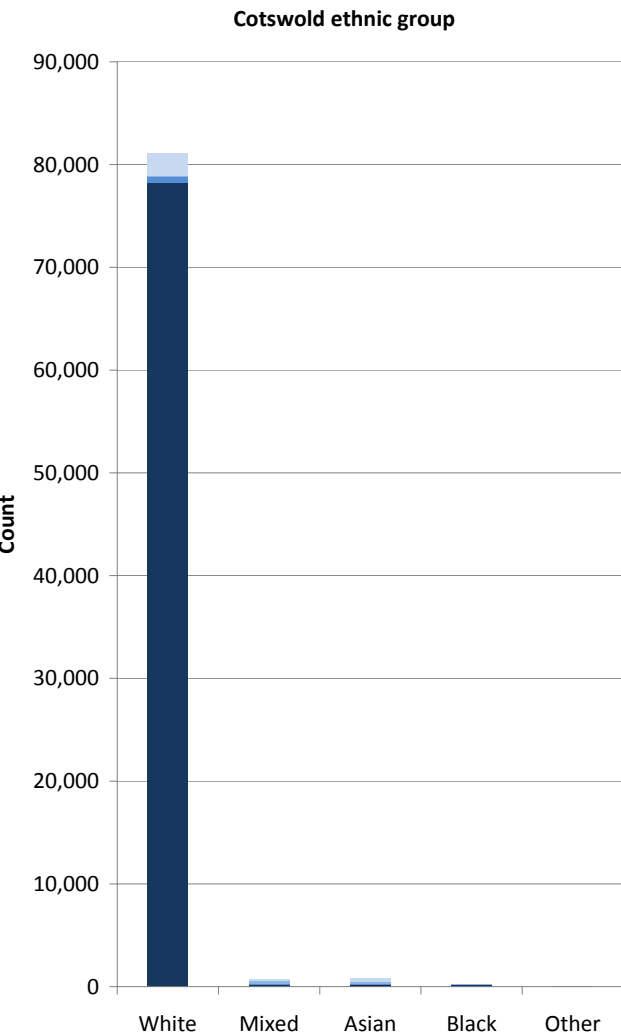


All female usual residents by age band



Cotswold  
KS201EW: Ethnic group

		2011				
Broad	Detailed	LA Count	South West Count	E&W Count	South West Rank	E&W Rank
White	English/Welsh/Scottish/Northern Irish	78,284	4,855,676	45,134,686	22	109
	Irish	503	28,616	531,087	8	184
	Gypsy or Irish traveller	87	5,631	57,680	14	133
	Other White	2,201	156,506	2,485,942	14	180
Mixed	White and Black Caribbean	167	25,669	426,715	29	317
	White and Black African	86	8,550	165,974	24	255
	White and Asian	274	21,410	341,727	17	226
	Other Mixed	171	16,255	289,984	20	247
Asian	Indian	218	34,188	1,412,958	16	291
	Pakistani	16	11,622	1,124,511	26	326
	Bangladeshi	38	8,416	447,201	32	299
	Chinese	223	22,243	393,141	15	229
	Other Asian	299	29,068	835,720	16	230
Black	African	136	24,226	989,628	15	248
	Caribbean	47	15,129	594,825	21	286
	Other Black	46	10,121	280,437	11	209
Other	Arab	4	5,692	230,600	36	345
	Any other ethnic group	81	9,917	333,096	17	265



	LA Count	South West Count	E&W Count	South West Rank	E&W Rank
White	81,075	5,046,429	48,209,395	19	68
Mixed	698	71,884	1,224,400	20	274
Asian	794	105,537	4,213,531	19	287
Black	229	49,476	1,864,890	16	259
Other	85	15,609	563,696	28	313

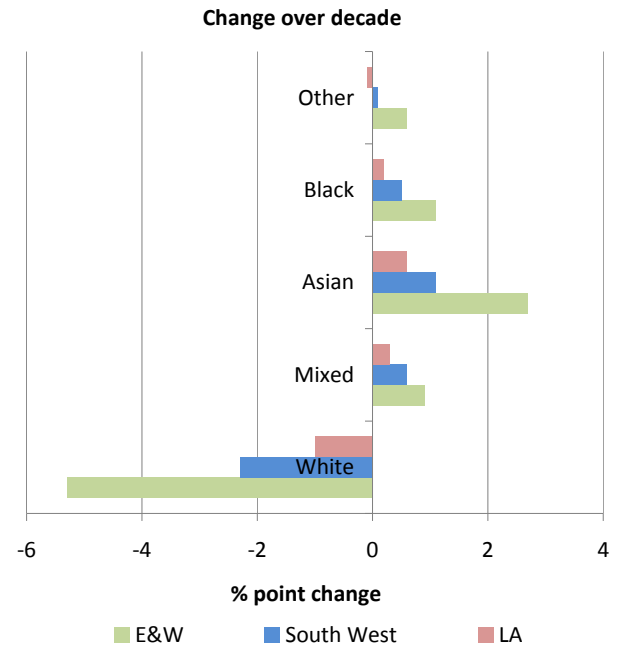
Cotswold  
KS201EW: Ethnic group

		LA		South West		E&W	
Broad	Detailed	Count	Change	Count	Change	Count	Change
White	English/Welsh/Scottish/Northern Irish	77,143	1,141	4,701,602	154,074	45,533,741	-399,055
	Irish	500	3	32,484	-3,868	641,804	-110,717
	Other White <sup>1</sup>	1,769	519	81,230	80,907	1,345,321	1,198,301

Mixed	White and Black Caribbean	104	63	13,343	12,326	237,420	189,295
	White and Black African	29	57	3,917	4,633	78,911	87,063
	White and Asian	137	137	11,198	10,212	189,015	152,712
	Other Mixed	114	57	8,913	7,342	155,687	134,297
Asian	Indian	104	114	16,394	17,794	1,036,807	376,151
	Pakistani	27	-11	6,727	4,895	714,823	409,688
	Bangladeshi	37	1	4,816	3,600	280,830	166,371
	Chinese	139	84	12,722	9,521	226,948	166,193
	Other Asian	25	274	4,861	24,207	241,272	594,448
Black	African	26	110	6,171	18,055	479,665	509,963
	Caribbean	31	16	12,405	2,724	563,844	30,981
	Other Black	25	21	2,344	7,777	96,069	184,368
Other	Any other ethnic group <sup>2</sup>	166	-81	9,305	6,304	219,753	343,943

1. To compare 2011 Census with 2001, White Gypsy or Irish traveller has been combined with White Other
2. To compare 2011 Census with 2001, Arab has been combined with Any other ethnic group

2001	LA		South West		E&W	
	Count	Change	Count	Change	Count	Change
White	79,412	1,663	4,815,316	231,113	47,520,866	688,529
Mixed	384	314	37,371	34,513	661,033	563,367
Asian	332	462	45,520	60,017	2,500,680	1,712,851
Black	82	147	20,920	28,556	1,139,578	725,312
Other	166	-81	9,305	6,304	219,753	343,943

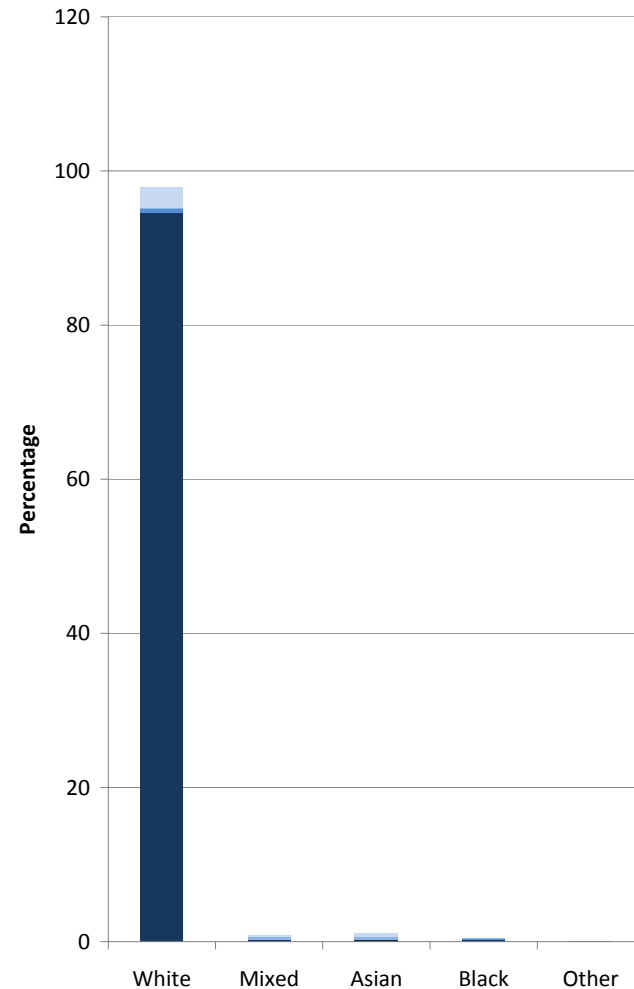




Cotswold  
KS201EW: Ethnic group

		2011				
Broad	Detailed	LA Percentage	South West Percentage	E&W Percentage	South West Rank	E&W Rank
White	English/Welsh/Scottish/Northern Irish	94.5	91.8	80.5	22	109
	Irish	0.6	0.5	0.9	8	184
	Gypsy or Irish traveller	0.1	0.1	0.1	14	133
	Other White	2.7	3	4.4	14	180
Mixed	White and Black Caribbean	0.2	0.5	0.8	29	317
	White and Black African	0.1	0.2	0.3	24	255
	White and Asian	0.3	0.4	0.6	17	226
	Other Mixed	0.2	0.3	0.5	20	247
Asian	Indian	0.3	0.6	2.5	16	291
	Pakistani	0	0.2	2	26	326
	Bangladeshi	0	0.2	0.8	32	299
	Chinese	0.3	0.4	0.7	15	229
	Other Asian	0.4	0.5	1.5	16	230
Black	African	0.2	0.5	1.8	15	248
	Caribbean	0.1	0.3	1.1	21	286
	Other Black	0.1	0.2	0.5	11	209
Other	Arab	0	0.1	0.4	36	345
	Any other ethnic group	0.1	0.2	0.6	17	265

Cotswold ethnic group



	LA Percentage	South West Percentage	E&W Percentage	South West Rank	E&W Rank
White	97.8	95.4	86	19	68
Mixed	0.8	1.4	2.2	20	274
Asian	1	2	7.5	19	287
Black	0.3	0.9	3.3	16	259
Other	0.1	0.3	1	28	313

Cotswold  
KS201EW: Ethnic group

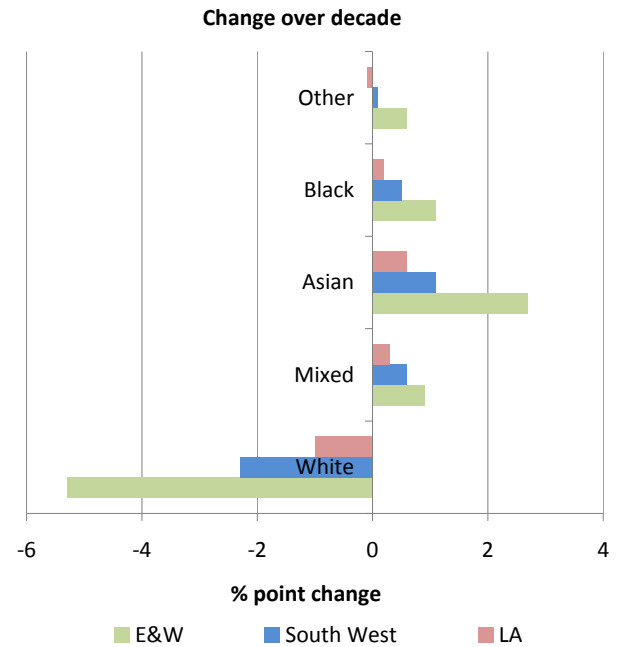
		2001					
Broad	Detailed	LA		South West		E&W	
		Percentage	% point change	Percentage	% point change	Percentage	% point change
White	English/Welsh/Scottish/Northern Irish	96	-1.5	95.4	-3.6	87.5	-7
	Irish	0.6	0	0.7	-0.2	1.2	-0.3
	Other White <sup>1</sup>	2.2	0.6	1.6	1.5	2.6	1.9

Mixed	White and Black Caribbean	0.1	0.1	0.3	0.2	0.5	0.3
	White and Black African	0	0.1	0.1	0.1	0.2	0.1
	White and Asian	0.2	0.1	0.2	0.2	0.4	0.2
	Other Mixed	0.1	0.1	0.2	0.1	0.3	0.2
Asian	Indian	0.1	0.2	0.3	0.3	2	0.5
	Pakistani	0	0	0.1	0.1	1.4	0.6
	Bangladeshi	0	0	0.1	0.1	0.5	0.3
	Chinese	0.2	0.1	0.3	0.1	0.4	0.3
	Other Asian	0	0.4	0.1	0.4	0.5	1
Black	African	0	0.2	0.1	0.4	0.9	0.9
	Caribbean	0	0.1	0.3	0	1.1	0
	Other Black	0	0.1	0	0.2	0.2	0.3
Other	Any other ethnic group <sup>2</sup>	0.2	-0.1	0.2	0.1	0.4	0.6

1. To compare 2011 Census with 2001, White Gypsy or Irish traveller has been combined with White Other

2. To compare 2011 Census with 2001, Arab has been combined with Any other ethnic group

2001	LA		South West		E&W	
	Percentage	% point change	Percentage	% point change	Percentage	% point change
White	98.8	-1	97.7	-2.3	91.3	-5.3
Mixed	0.5	0.3	0.8	0.6	1.3	0.9
Asian	0.4	0.6	0.9	1.1	4.8	2.7
Black	0.1	0.2	0.4	0.5	2.2	1.1
Other	0.2	-0.1	0.2	0.1	0.4	0.6

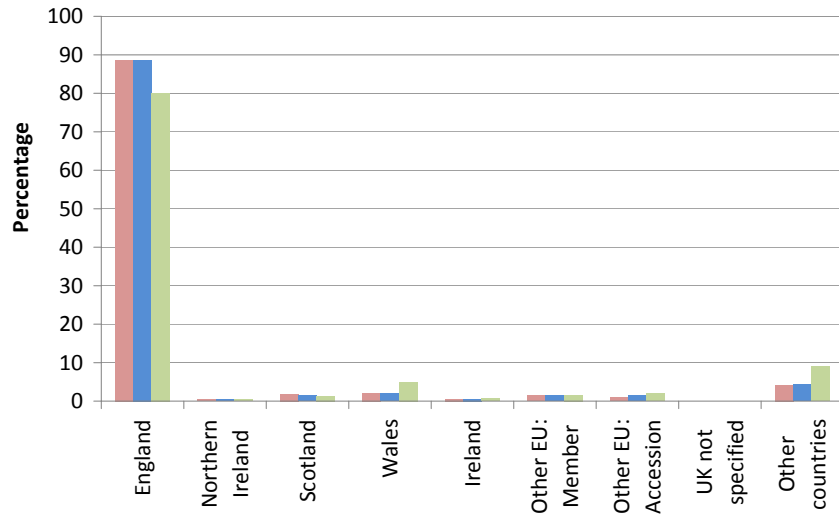


Cotswold

KS204EW: Country of Birth

2011	LA	South West	E&W	South West	E&W
	Count	Count	Count	Rank	Rank
England	73,443	4,685,457	44,882,858	26	171
Northern Ireland	354	20,467	214,988	9	103
Scotland	1,462	73,946	733,218	5	61
Wales	1,754	103,767	2,732,624	11	37
Ireland	437	24,165	407,357	7	166
Other EU: Member countries in March 2001	1,189	75,284	921,251	13	126
Other EU: Accession countries April 2001 to March 2011	776	75,601	1,114,368	24	234
UK not otherwise specified	13	638	7,214	5	65
Other countries	3,453	229,610	5,062,034	10	180

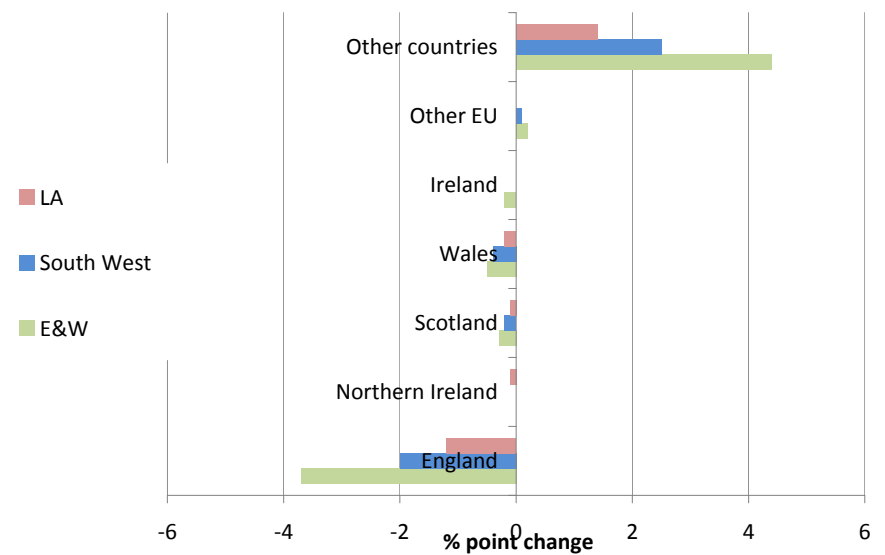
2011 Country of Birth



2001

LA		South West		E&W	
Count	Change	Count	Change	Count	Change
72,138	1,305	4,464,653	220,804	43,558,424	1,324,434
366	-12	20,305	162	222,975	-7,987
1,511	-49	77,794	-3,848	818,966	-85,748
1,859	-105	116,283	-12,516	2,798,465	-65,841
433	4	25,934	-1,769	472,380	-65,023
1,095	94	65,425	9,859	718,739	202,512
2,974	1,268	158,040	147,809	3,451,967	2,731,649

Change over decade

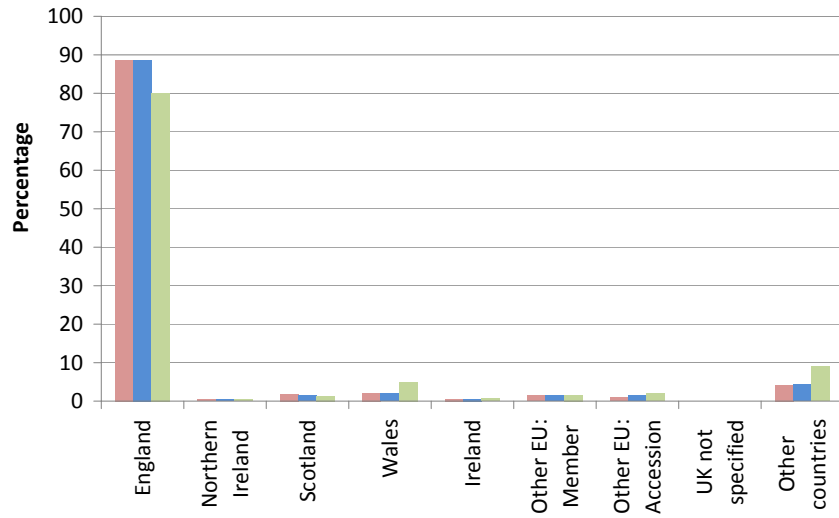


Cotswold

KS204EW: Country of Birth

2011	LA	South West	E&W	South West	E&W
	Percentage	Percentage	Percentage	Rank	Rank
England	88.6	88.6	80	26	171
Northern Ireland	0.4	0.4	0.4	9	103
Scotland	1.8	1.4	1.3	5	61
Wales	2.1	2	4.9	11	37
Ireland	0.5	0.5	0.7	7	166
Other EU: Member countries in March 2001	1.4	1.4	1.6	13	126
Other EU: Accession countries April 2001 to March 2011	0.9	1.4	2	24	234
UK not otherwise specified	0	0	0	5	65
Other countries	4.2	4.3	9	10	180

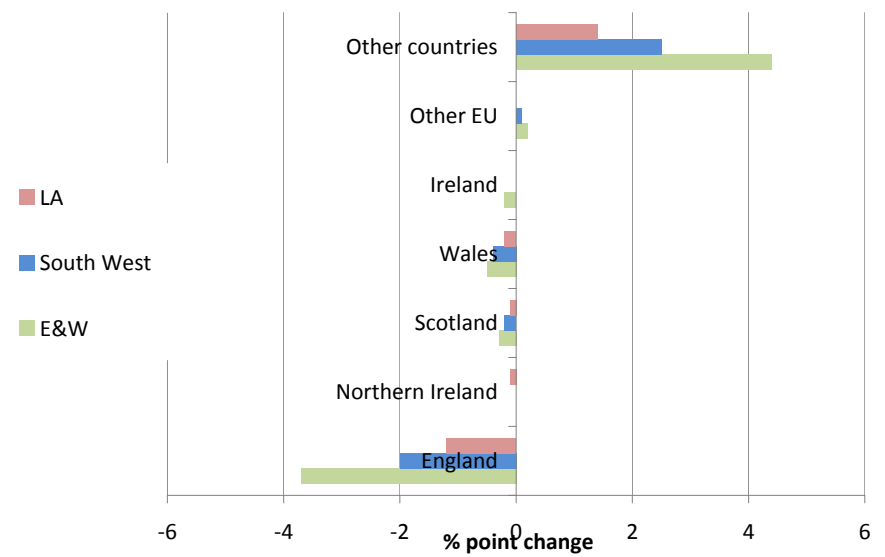
2011 Country of Birth



2001

2001	LA		South West		E&W	
	Percentage	% point change	Percentage	% point change	Percentage	% point change
	89.8	-1.2	90.6	-2	83.7	-3.7
	0.5	-0.1	0.4	0	0.4	0
	1.9	-0.1	1.6	-0.2	1.6	-0.3
	2.3	-0.2	2.4	-0.4	5.4	-0.5
	0.5	0	0.5	0	0.9	-0.2
	1.4	0	1.3	0.1	1.4	0.2
	3.7	1.4	3.2	2.5	6.6	4.4

Change over decade



<b>2011 Census: KS206EW Household language (counts)</b>					
	Cotswold	Gloucestershire	SW	ENGLAND	E & W
All categories: English as a household language	36236	254615	2264641	22063368	23366044
All people aged 16 and over in household have English as a main language	35292	244554	2171555	20053717	21313812
At least one but not all people aged 16 and over in household have English as a main language	550	4696	41691	850510	868431
No people aged 16 and over in household but at least one person aged 3 to 15 has English as a main language	38	631	6197	178838	181729
No people in household have English as a main language	356	4734	45198	980303	1002072

<b>2011 Census: KS206EW Household language (percentages)</b>						
	Cotswold	Gloucestershire	SW	ENGLAND	E & W	E & W RANK
All people aged 16 and over in household have English as a main language	97.4	96	95.9	90.9	91.2	107
At least one but not all people aged 16 and over in household have English as a main language	1.5	1.8	1.8	3.9	3.7	207
No people aged 16 and over in household but at least one person aged 3 to 15 has English as a main language	0.1	0.2	0.3	0.8	0.8	293
No people in household have English as a main language	1	1.9	2	4.4	4.3	256

\*English or Welsh in Wales

Based on All households

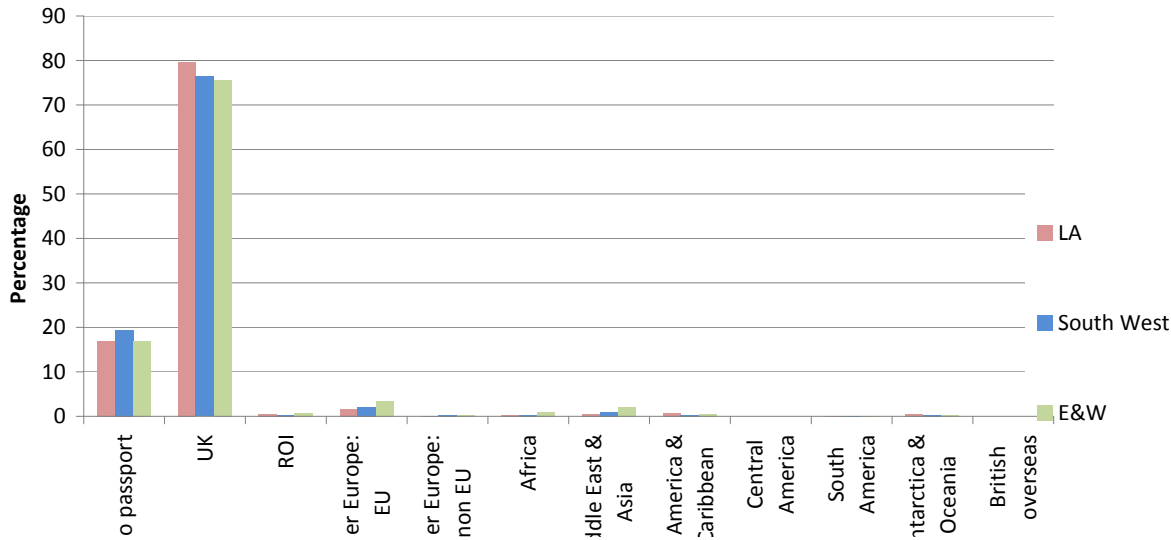
Ranks - each category for each district and unitary authority is ranked within England and Wales, with ranks based on percentages

Source: 2011 Census, Office for National Statistics © Crown Copyright 2012

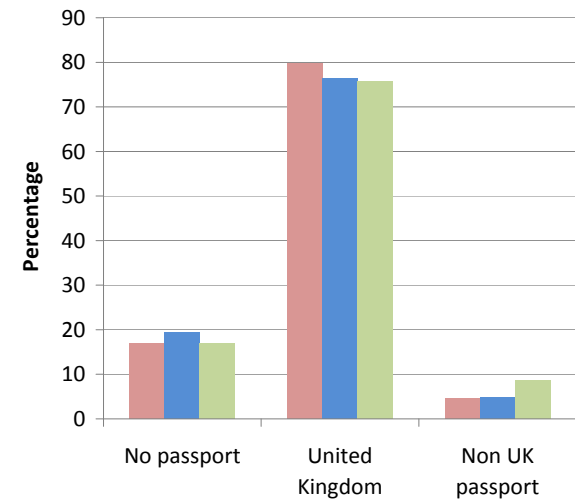


2011	LA		South West		E&W		South West	E&W
	Count	Percentage	Count	Percentage	Count	Percentage	Rank	Rank
No passport	14,013	16.9	1,028,436	19.4	9,458,051	16.9	25	192
United Kingdom	66,070	79.7	4,042,196	76.4	42,456,526	75.7	8	102
Republic of Ireland	418	0.5	21,357	0.4	409,065	0.7	6	151
Other Europe: EU countries	1,374	1.7	117,661	2.2	1,940,480	3.5	22	212
Other Europe: Non EU countries	104	0.1	8,648	0.2	149,284	0.3	20	184
Africa	325	0.4	19,717	0.4	520,635	0.9	11	171
Middle East and Asia	425	0.5	48,558	0.9	1,135,432	2.0	16	233
North America and the Caribbean	601	0.7	21,504	0.4	336,241	0.6	3	60
Central America	5	0.0	563	0.0	9,202	0.0	23	201
South America	66	0.1	3,962	0.1	74,288	0.1	7	99
Antarctica and Oceania	514	0.6	16,843	0.3	210,725	0.4	2	38
British Overseas Territories	5	0.0	232	0.0	2,121	0.0	10	57

Passports held, detailed



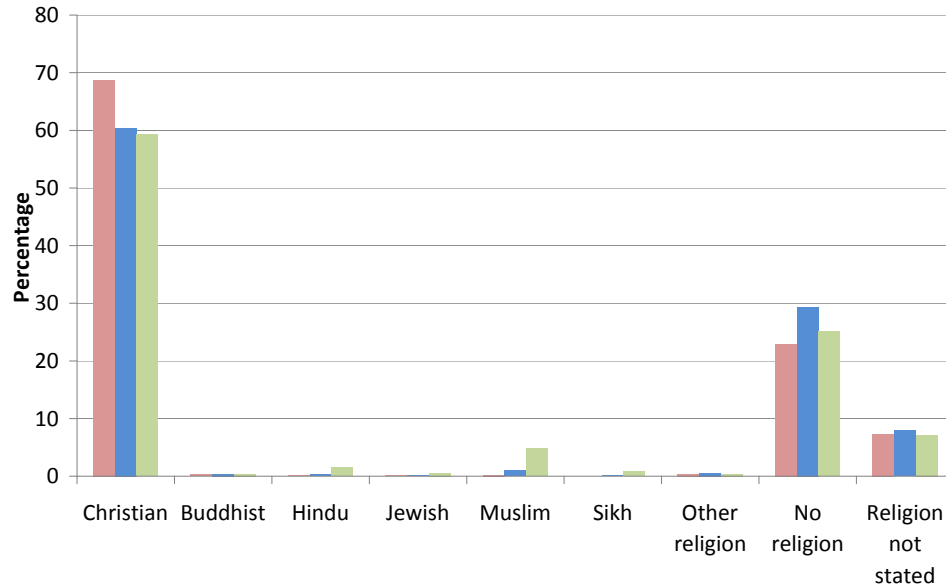
Passports held, broad



Cotswold  
KS209EW: Religion

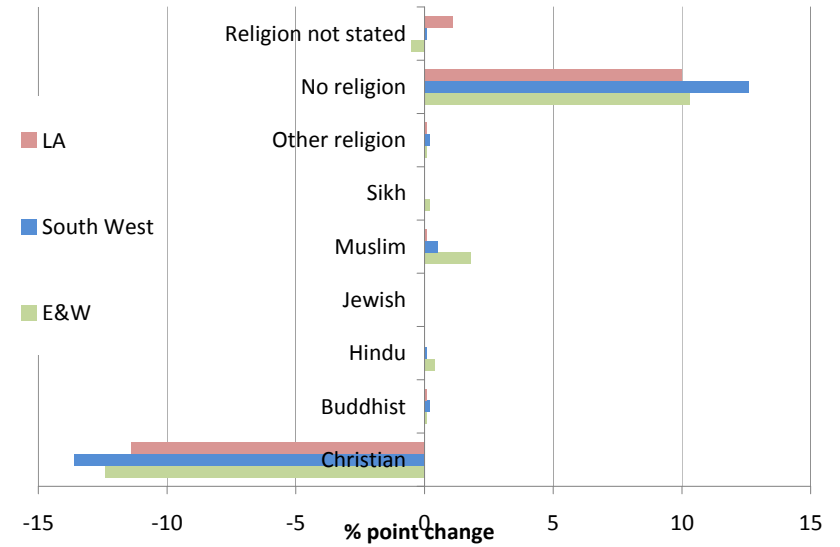
2011	LA	South West	E&W	South West	E&W
	Count	Count	Count	Rank	Rank
Christian	56,923	3,194,066	33,243,175	1	48
Buddhist	217	19,730	247,743	29	217
Hindu	114	16,324	816,633	16	287
Jewish	123	6,365	263,346	7	125
Muslim	164	51,228	2,706,066	27	326
Sikh	7	5,892	423,158	32	339
Other religion	314	29,279	240,530	35	175
No religion	18,979	1,549,201	14,097,229	37	252
Religion not stated	6,040	416,850	4,038,032	33	142

Religion



2001	LA		South West		E&W	
	Count	Change	Count	Change	Count	Change
Christian	64,405	-7,482	3,646,488	-452,422	37,338,486	-4,095,311
Buddhist	147	70	11,299	8,431	144,453	103,290
Hindu	60	54	8,288	8,036	552,421	264,212
Jewish	113	10	6,747	-382	259,927	3,419
Muslim	103	61	23,465	27,763	1,546,626	1,159,440
Sikh	20	-13	4,614	1,278	329,358	93,800
Other religion	229	85	18,221	11,058	150,720	89,810
No religion	10,346	8,633	825,461	723,740	7,709,267	6,387,962
Religion not stated	4,953	1,087	383,851	32,999	4,010,658	27,374

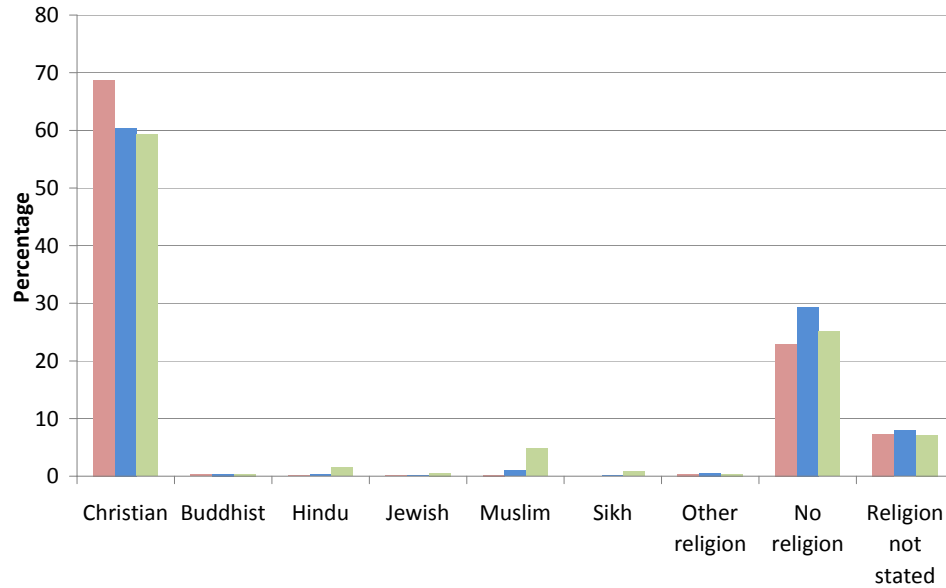
Change over decade



Cotswold  
KS209EW: Religion

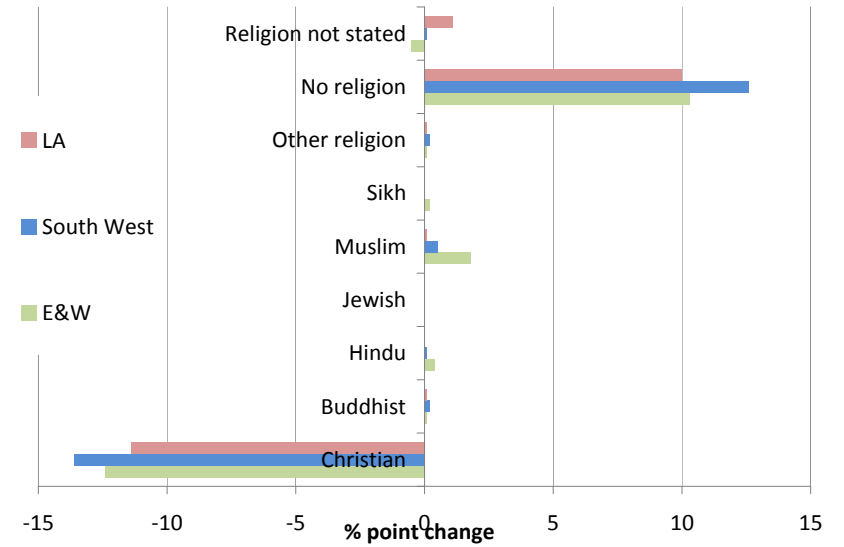
2011	LA	South West	E&W	South West	E&W
	Percentage	Percentage	Percentage	Rank	Rank
Christian	68.7	60.4	59.3	1	48
Buddhist	0.3	0.4	0.4	29	217
Hindu	0.1	0.3	1.5	16	287
Jewish	0.1	0.1	0.5	7	125
Muslim	0.2	1	4.8	27	326
Sikh	0	0.1	0.8	32	339
Other religion	0.4	0.6	0.4	35	175
No religion	22.9	29.3	25.1	37	252
Religion not stated	7.3	7.9	7.2	33	142

Religion



2001	LA		South West		E&W	
	Percentage	% point change	Percentage	% point change	Percentage	% point change
Christian	80.1	-11.4	74	-13.6	71.7	-12.4
Buddhist	0.2	0.1	0.2	0.2	0.3	0.1
Hindu	0.1	0	0.2	0.1	1.1	0.4
Jewish	0.1	0	0.1	0	0.5	0
Muslim	0.1	0.1	0.5	0.5	3	1.8
Sikh	0	0	0.1	0	0.6	0.2
Other religion	0.3	0.1	0.4	0.2	0.3	0.1
No religion	12.9	10	16.7	12.6	14.8	10.3
Religion not stated	6.2	1.1	7.8	0.1	7.7	-0.5

Change over decade

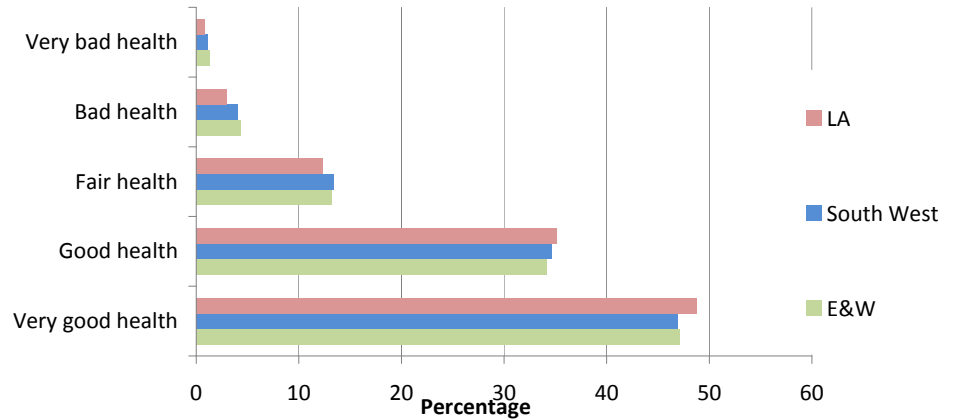




Cotswold

**KS301EW: Health and provision of unpaid care: General health**

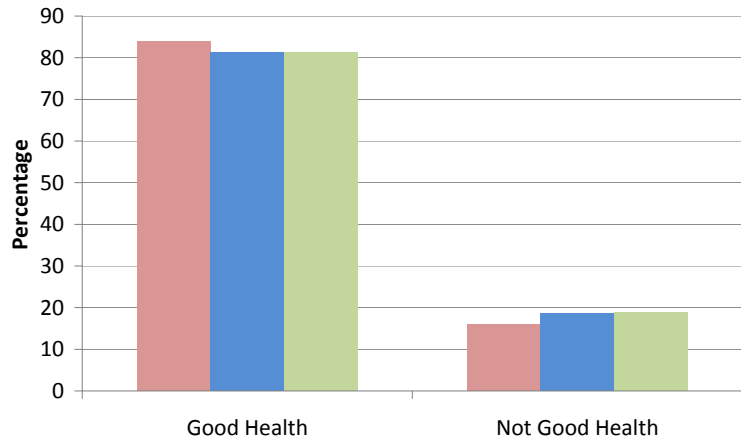
2011	LA	South West	E&W	South West	E&W
	Count	Count	Count	Rank	Rank
Very good health	40,433	2,478,081	26,434,409	8	98
Good health	29,067	1,828,026	19,094,820	17	118
Fair health	10,220	710,356	7,401,881	29	237
Bad health	2,498	212,080	2,428,668	36	298
Very bad health	663	60,392	716,134	36	310



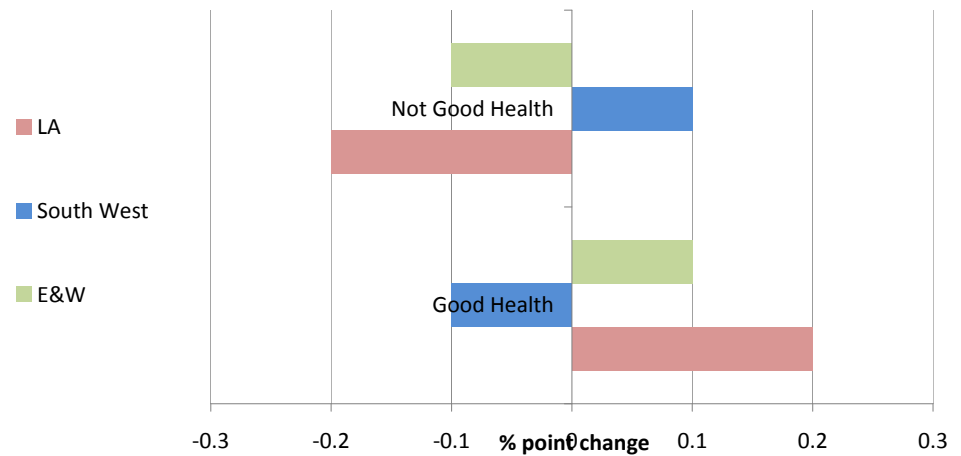
2011	LA	South West	E&W	South West	E&W
	Count	Count	Count	Rank	Rank
Good Health	69,500	4,306,107	45,529,229	5	84
Not Good Health	13,381	982,828	10,546,683	33	265

2001	LA		South West		E&W	
	Count	Change	Count	Change	Count	Change
Good Health	67,298	2,202	4,016,886	289,221	42,183,761	3,345,469
Not Good Health	13,078	303	911,548	71,280	9,858,156	688,528

**General health**



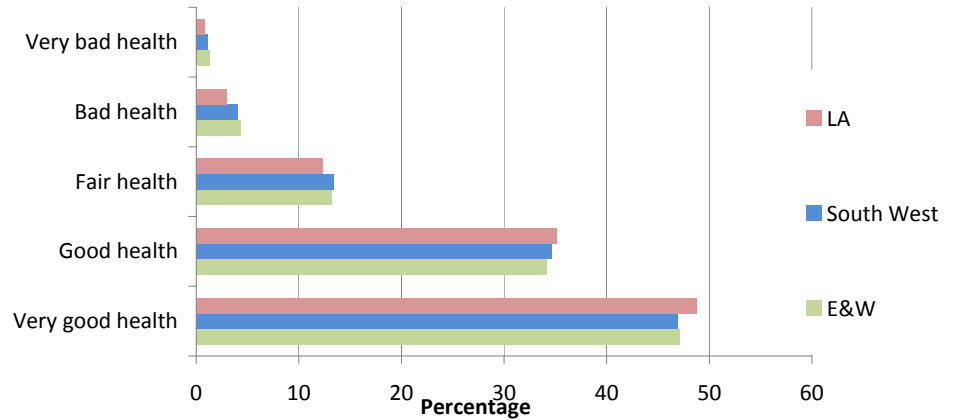
**Change over decade**



Cotswold

KS301EW: Health and provision of unpaid care: General health

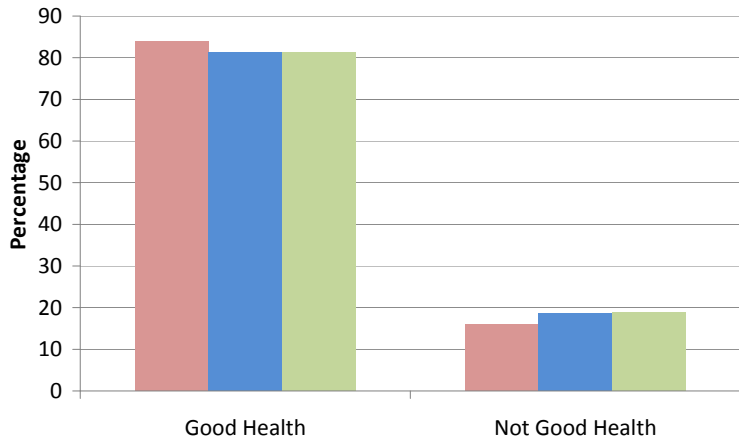
2011	LA	South West	E&W	South West	E&W
	Percentage	Percentage	Percentage	Rank	Rank
Very good health	48.8	46.9	47.1	8	98
Good health	35.1	34.6	34.1	17	118
Fair health	12.3	13.4	13.2	29	237
Bad health	3	4	4.3	36	298
Very bad health	0.8	1.1	1.3	36	310



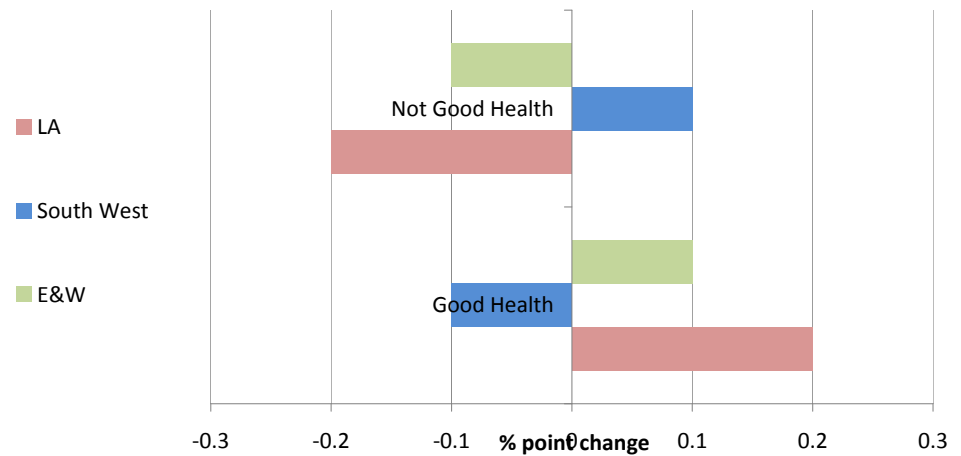
2011	LA	South West	E&W	South West	E&W
	Percentage	Percentage	Percentage	Rank	Rank
Good Health	83.9	81.4	81.2	5	84
Not Good Health	16.1	18.6	18.8	33	265

2001	LA		South West		E&W	
	Percentage	% point change	Percentage	% point change	Percentage	% point change
Good Health	83.7	0.2	81.5	-0.1	81.1	0.1
Not Good Health	16.3	-0.2	18.5	0.1	18.9	-0.1

General health



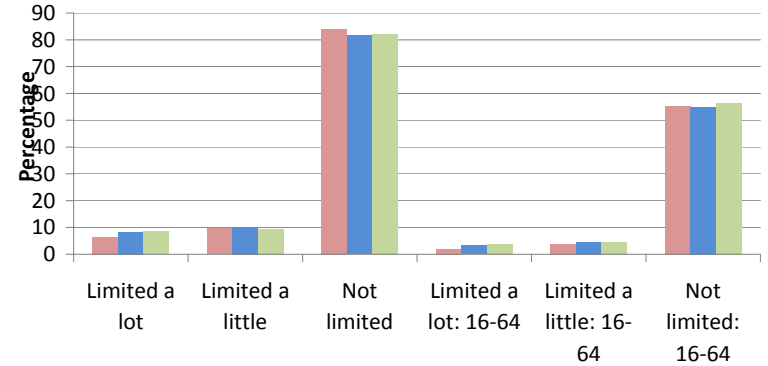
Change over decade



Cotswold

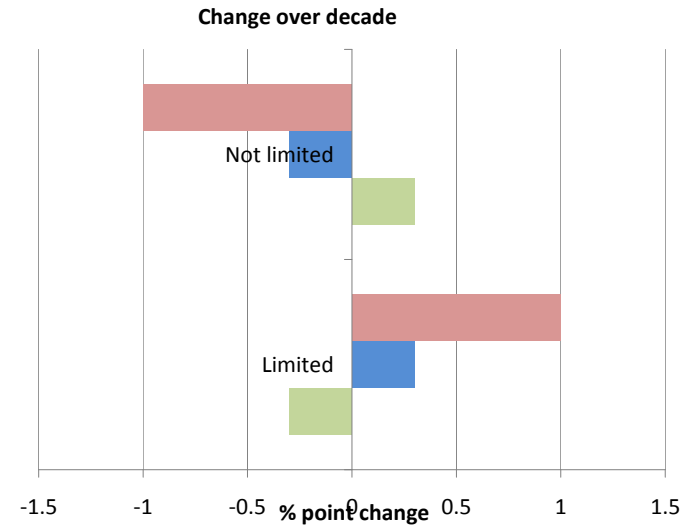
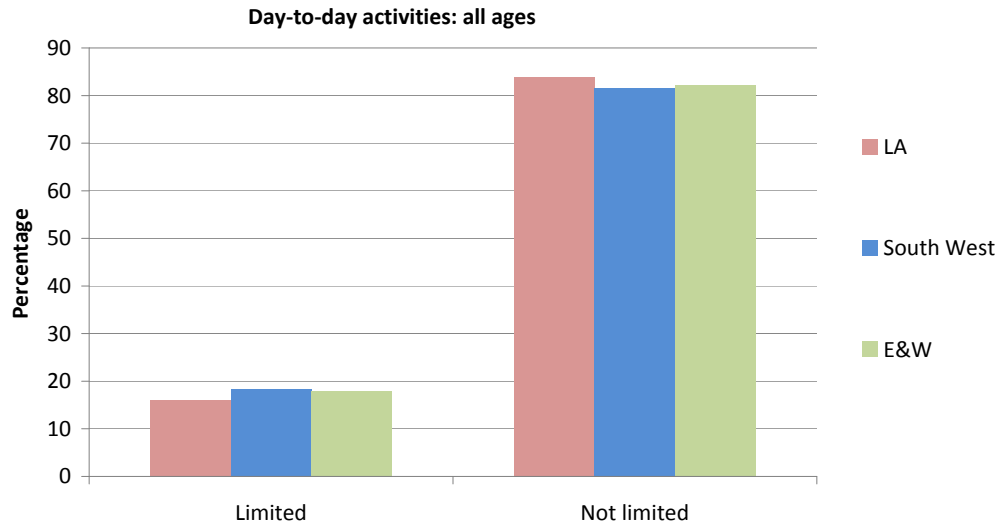
**KS301EW: Health and provision of unpaid care: Day-to-day activities**

	2011	LA Count	South West Count	E&W Count	South West Rank	E&W Rank
Day-to-day activities limited a lot		5,417	436,733	4,769,712	36	279
Day-to-day activities limited a little		7,952	536,963	5,278,729	26	186
Day-to-day activities not limited		69,512	4,315,239	46,027,471	7	119
Day-to-day activities limited a lot: Age 16 to 64		1,770	173,355	2,086,236	36	316
Day-to-day activities limited a little: Age 16 to 64		3,113	243,108	2,619,966	36	304
Day-to-day activities not limited: Age 16 to 64		45,766	2,907,350	31,567,505	14	190



	2011	LA Count	South West Count	E&W Count
Day-to-day activities limited		13,369	973,696	10,048,441
Day-to-day activities not limited		69,512	4,315,239	46,027,471

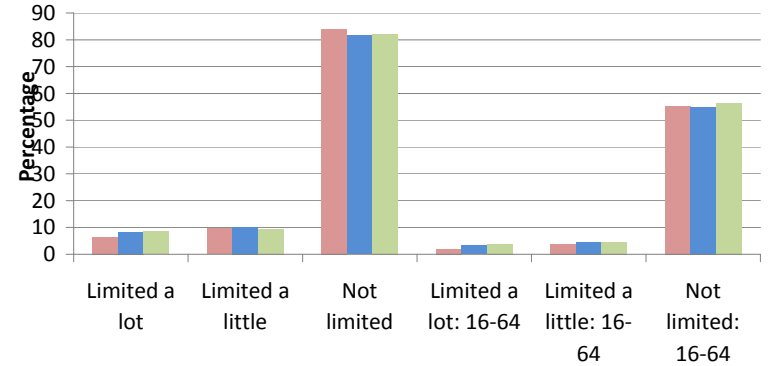
	2001		South West		E&W	
	Count	Change	Count	Change	Count	Change
Day-to-day activities limited	12,134	1,235	892,034	81,662	9,484,856	563,585
Day-to-day activities not limited	68,242	1,270	4,036,400	278,839	42,557,060	3,470,411



Cotswold

**KS301EW: Health and provision of unpaid care: Day-to-day activities**

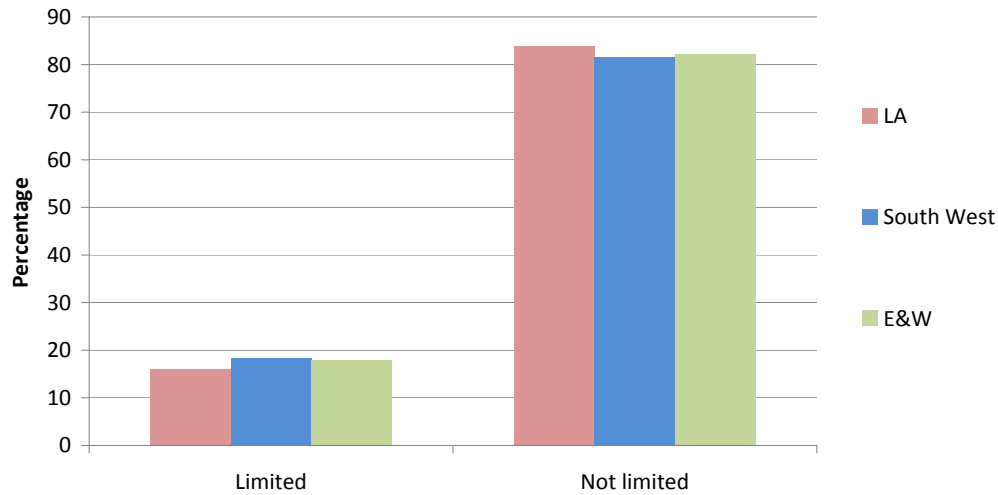
	LA Percentage	South West Percentage	E&W Percentage	South West Rank	E&W Rank
Day-to-day activities limited a lot	6.5	8.3	8.5	36	279
Day-to-day activities limited a little	9.6	10.2	9.4	26	186
Day-to-day activities not limited	83.9	81.6	82.1	7	119
Day-to-day activities limited a lot: Age 16 to 64	2.1	3.3	3.7	36	316
Day-to-day activities limited a little: Age 16 to 64	3.8	4.6	4.7	36	304
Day-to-day activities not limited: Age 16 to 64	55.2	55	56.3	14	190



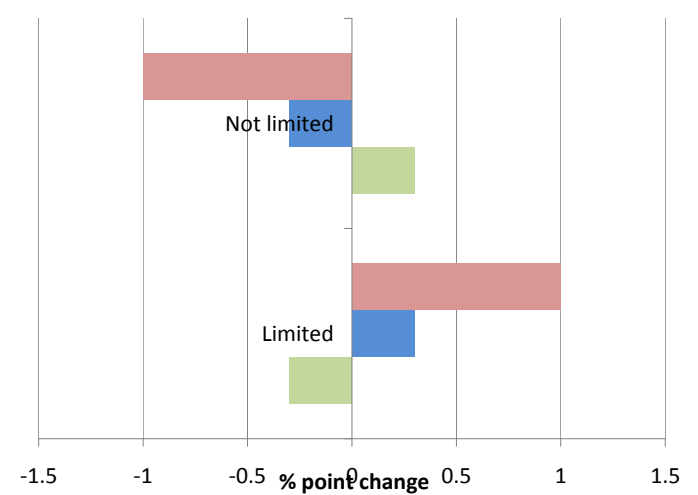
	LA Percentage	South West Percentage	E&W Percentage
Day-to-day activities limited	16.1	18.4	17.9
Day-to-day activities not limited	83.9	81.6	82.1

	LA	South West		E&W		
	Percentage	% point change	Percentage	% point change	Percentage	% point change
2001	15.1	1	18.1	0.3	18.2	-0.3
	84.9	-1	81.9	-0.3	81.8	0.3

Day-to-day activities: all ages



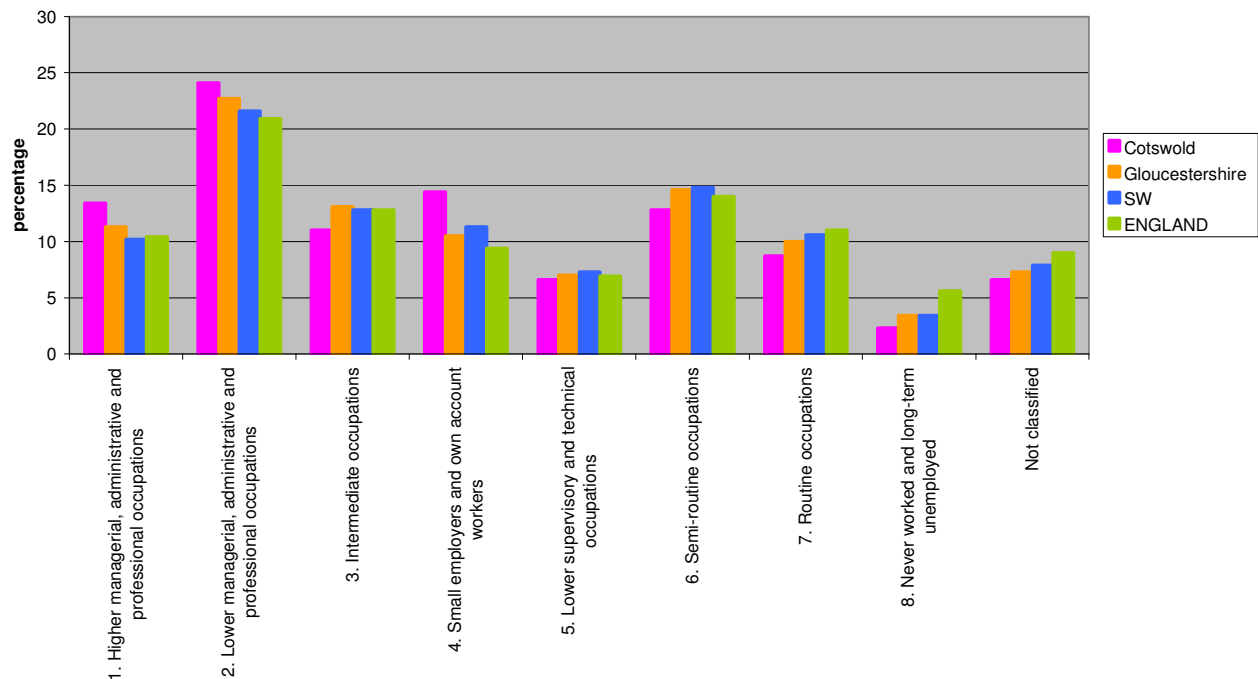
Change over decade



2011 Census: KS611EW NS Socio-economic classification (counts)					
	Cotswold	Gloucestershire	SW	ENGLAND	E & W
All categories: NS-SeC (All usual residents aged 16 to 74)	60075	437088	3856715	38881374	41126540
1. Higher managerial, administrative and professional occupations	8037	49494	394860	4045823	4220766
1.1 Large employers and higher managerial and administrative occupations	2199	12226	93294	926352	967013
1.2 Higher professional occupations	5838	37268	301566	3119471	3253753
2. Lower managerial, administrative and professional occupations	14490	99434	834208	8132107	8571458
3. Intermediate occupations	6602	57341	492794	4972044	5240440
4. Small employers and own account workers	8679	45890	435470	3662611	3872779
5. Lower supervisory and technical occupations	3951	30679	281682	2676118	2857185
6. Semi-routine occupations	7697	63701	571727	5430863	5789519
7. Routine occupations	5247	43687	407663	4277483	4564916
8. Never worked and long-term unemployed	1380	14939	131735	2180026	2301614
L14.1 Never worked	846	9434	85176	1511530	1594690
L14.2 Long-term unemployed	534	5505	46559	668496	706924
Not classified	3992	31923	306576	3504299	3707863
L15 Full-time students	3992	31923	306576	3504299	3707863
L17 Not classifiable for other reasons	0	0	0	0	0

2011 Census: KS611EW NS Socio-economic classification (percentages)						
	Cotswold	Gloucestershire	SW	ENGLAND	E & W	E & W RANK
1. Higher managerial, administrative and professional occupations	13.4	11.3	10.2	10.4	10.3	66
1.1 Large employers and higher managerial and administrative occupations	3.7	2.8	2.4	2.4	2.4	38
1.2 Higher professional occupations	9.7	8.5	7.8	8	7.9	84
2. Lower managerial, administrative and professional occupations	24.1	22.7	21.6	20.9	20.8	73
3. Intermediate occupations	11	13.1	12.8	12.8	12.7	304
4. Small employers and own account workers	14.4	10.5	11.3	9.4	9.4	22
5. Lower supervisory and technical occupations	6.6	7	7.3	6.9	6.9	242
6. Semi-routine occupations	12.8	14.6	14.8	14	14.1	246
7. Routine occupations	8.7	10	10.6	11	11.1	259
8. Never worked and long-term unemployed	2.3	3.4	3.4	5.6	5.6	333
L14.1 Never worked	1.4	2.2	2.2	3.9	3.9	338
L14.2 Long-term unemployed	0.9	1.3	1.2	1.7	1.7	328
Not classified	6.6	7.3	7.9	9	9	161
L15 Full-time students	6.6	7.3	7.9	9	9	161
L17 Not classifiable for other reasons	0	0	0	0	0	1

#### NS Socio-economic classification - all residents aged 16-74



\*National Statistics socio-economic classification measures 'aspects of work and market situation, and of the labour contract' and 'distinguishes different positions (not people) as defined by social relationships in the workplace' (see ONS website for further information)

Based on All usual residents aged 16 to 74

Ranks - each category for each district and unitary authority is ranked within England and Wales, with ranks based on percentages

Source: 2011 Census, Office for National Statistics © Crown Copyright 2012