

COTSWOLD DISTRICT LOCAL PLAN 2011-2031 (PARTIAL UPDATE): REGULATION 18 'ISSUES & OPTIONS' CONSULTATION

4th February 2022 to 20th March 2022

FREQUENTLY ASKED QUESTIONS (FAQs)

What is a Local Plan?

For Cotswold District, the Local Plan is the statutory development plan setting out the principal policies and proposals for land use in the District. It contains a development strategy, allocates sites for future development and sets out policies used in decision making on planning matters. It must be supported by evidence and accord with national planning policy and guidance.

What is this consultation about?

Last year the Council agreed a programme of work to update the Local Plan partially so that it can respond to the Council's new Corporate Plan, climate and ecological emergency declarations and recent changes to national planning policy and guidance. The Council has now reached the first formal consultation stage in the partial update process – known as the Regulation 18 'Issues and Options' consultation.

The public consultation invites comments on issues and options covering 18 planning topics / themes. Your comments together with updated evidence will be considered and used to inform the next stage of the plan preparation process – the draft Local Plan Partial Update – which will be the subject of a further round of consultation in 2023.

How long does the consultation last?

The consultation will be available for comment for just over 6 weeks from **Friday 4th February until 11:59pm on Sunday 20th March 2022.**

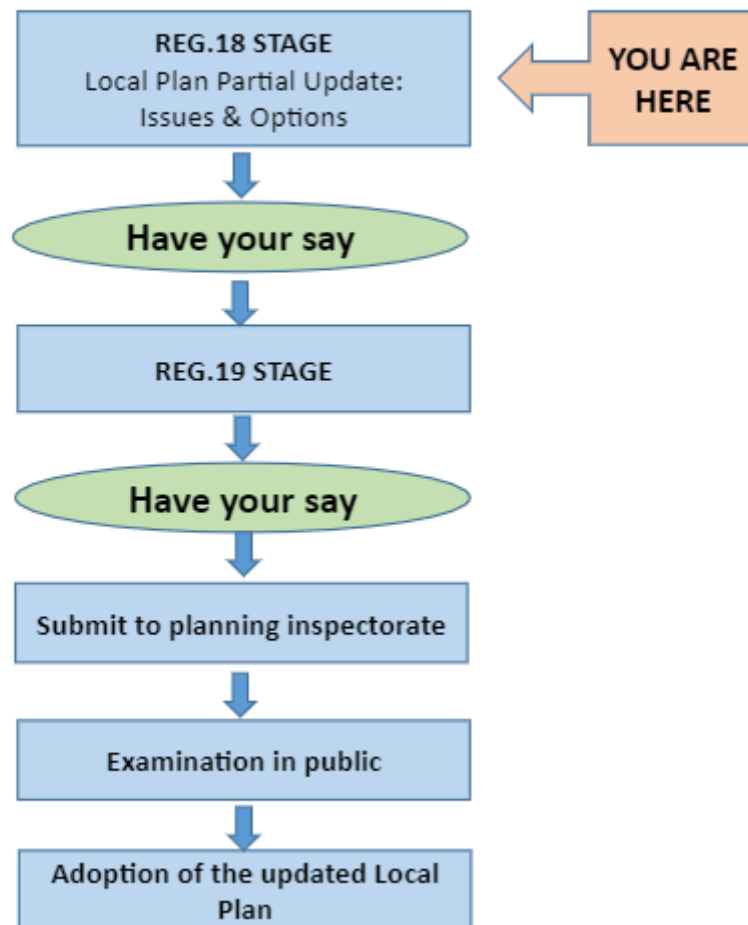
Please note that comments submitted after 11:59pm on Sunday 20th March 2022 will normally not be considered.

Who can comment?

Anyone, regardless of where they live, or whether they are objecting to or supporting options and proposals, can submit comments on local plans. Comments can be made at various stages during the preparation of the plan, usually during a set consultation period. For more information about who can comment please read our Statement of Community Involvement.

<https://www.cotswold.gov.uk/media/8d88d41e4a43c5c/9101-statement-of-community-involvement.pdf>

What stage in the partial update of the Local Plan process are we?



What is a Regulation 18 “Issues and Options” Consultation?

The Regulation 18 consultation marks the start of the engagement stage of the Local Plan for Cotswold District. It is the scoping stage where you consider the factors that are influencing the need to update the adopted Local Plan.

Regulation 18 of the Town and Country Planning (Local Planning) Regulations 2012 requires that various bodies and stakeholders be notified that the council is preparing / updating its local plan. It invites you to comment on the issues affecting your local area and possible planning solutions that the Council should consider. Comments received during this consultation are considered and used to inform the next stage of plan preparation - a draft Local Plan Partial Update document. This document will contain amended and new planning policies.

What does this consultation document include?

The public consultation invites comments on a targeted update of the adopted Local Plan, focussing on specific issues and options covering 18 planning topics / themes. Your comments,

together with updated evidence, will be considered and used to inform the next stage of the plan preparation process – the draft Local Plan Partial Update – which will be the subject of a further round of consultation in 2023.

Supporting evidence (so far) can be viewed or downloaded at;
<https://www.cotswold.gov.uk/planning-and-building/planning-policy/>.

Are future housing sites shown in this consultation document?

No future housing sites have been chosen yet but some work has been done to discount sites that we believe are unsuitable for development and to provide a shortlist of potential sites, which we will need to refine further. We also need to do various other pieces of work to better understand the sites, their suitability for development and the opportunities they could deliver.

There is a set of consultation questions in the topic paper on Housing Need, Requirement, Supply and Delivery, which focussed on the work that we've already done to assess potential housing sites. We would like your help to check that our understanding of sites is right and to let us know what things are needed in your area.

Why is it important that I take part in the consultation?

To have the best chance of influencing what goes into the local plan, comments should be made at the earliest opportunity. The later in the process concerns are raised, the less likely it will be that changes can be made.

How do I make my views known?

There are different ways to make your comments.

We recommend that you submit comments online via the following link:
<https://issuesandoptions.commonplace.is/>. As well as being easy to submit your comments to the relevant sections of the document, it also allows Officers to process these comments quickly, helping us to keep the Local Plan timetable on track.

Alternatively, comments can be submitted via email or by post. A comment form should be used, which is available from the District Council's website at the following link: .

<https://www.cotswold.gov.uk/planning-and-building/planning-policy/>

Comments must be emailed to local.plan@cotswold.gov.uk or posted to: Local Plan Consultation, Forward Planning Team, Cotswold District Council, Trinity Road, Cirencester, GL7 1PX.



You can also scan the QR code, which will take you directly to the Issues and Options public consultation.

You can also submit your comments at our Public Consultation Events – see FAQ below.

Remember :The **deadline** for all comments will be **11:59pm on Sunday 20th March 2022**.

Are any public events being held?

Yes. Public drop in events have been arranged for:

- Wednesday, 2nd March 2022 from 2pm until 6:30pm at the Committee Rooms, Council Offices, Trinity Road, Cirencester, GL7 1PX; and
- Wednesday, 9th March 2022 from 2pm until 6:30pm at Moreton Area Centre, High Street, Moreton-in-Marsh, GL7 0A7

Where can I view the proposals?

As well as the public events listed above, the Local Plan Reg. 18 Issues and Options public consultation can be viewed at the following locations:

1. Council Offices, Trinity Road, Cirencester, GL7 1PX;
2. Moreton Area Centre, High Street, Moreton-in-Marsh, GL7 0A7;
3. All Public Libraries in the District;
4. The Document, and all the evidence papers can be viewed online at <https://www.cotswold.gov.uk/planning-and-building/planning-policy/>; and

Hard copies of the documents are available on request by contacting local.plan@cotswold.gov.uk or by contacting our customer services department on 01285 623000. Please note our standard print and postage charges may apply.

A4 single sided full colour 6.5pence per sheet, black and white single sided 2 pence per page.

Is there anything I need to make sure I do when making comments on the consultation?

Yes. Comments can only be received in a written format with your name, postcode and email address (if you do not have an email address then your full home address). Unfortunately we cannot accept confidential or anonymous responses. Further privacy information can be found on our website. Please be aware that names and comments, once processed, will be made publicly available on the Council's website. Local Plan making consultation - Privacy Notice - Cotswold District Council.

<https://www.cotswold.gov.uk/support/privacy-and-data/service-privacy-notice/local-plan-making-consultation-privacy-notice/>

If you no longer wish to be listed on our consultation database and notified of future events, please let us know.

How has the consultation paper been advertised?

The consultation will / has been publicised in numerous ways, including: press releases, a flyer going to every home in Cotswold District, social media adverts, notifications have been sent to all those registered on the Local Plan database, and liaison with all Town and Parish councils across the district.

What's Next?

We will acknowledge receipt of all representations on planning policy. Correspondence sent to local.plan@cotswold.gov.uk will receive an automated receipt.

We will summarise comments received after the consultation and this will be made available via a 'consultation statement' that accompanies the emerging local plan partial update and other planning documents. This document will outline how the main issues raised by consultation have been addressed.

Why does the Council need a Local Plan at all?

Every Local Planning Authority must produce a Local Plan to meet the requirements of the National Planning Policy Framework (NPPF). The Plan should steer future development and meet stringent guidelines across a range of land use issues including:

- allocating land for housing;
- creation of employment opportunities;
- identifying necessary infrastructure improvements; and
- safeguarding environmental assets and heritage.

What is the timetable for completion of the partial update to the Local Plan?

The timetable for the partial update of the Local Plan can be found in the Local Development Scheme (LDS) 2021 to 2024 (agreed in May 2021 <https://www.cotswold.gov.uk/media/fmtasbbs/local-development-scheme-may-2021.pdf>). It explains what planning policy documents the Council already has in place and what will be prepared during the three-year period May 2021 – April 2024.

Why does it take so long to produce a Local Plan and who decides whether the Plan meets the government's approval?

Local Plans must be based on robust and up-to-date evidence, which meets legal requirements and tests of soundness (see National Planning Policy Framework paragraph 35 https://assets.publishing.service.gov.uk/government/uploads/system/uploads/attachment_data/file/1005759/NPPF_July_2021.pdf).

Evidence is rigorously tested and challenged at an independent public Examination. Many plans across the country have had to be withdrawn for various reasons before, during or after Examination, including failure to comply with national policy or statutory requirements.

The Council should not submit its Local Plan before it is confident that it will succeed at Examination. To do otherwise would be inefficient and wasteful of resources, and ultimately delay the Local Plan partial update from being adopted. The district is vulnerable to unplanned development occurring in undesirable locations if it is unable to keep the Local Plan up-to-date.

Remember: the deadline for all comments is 11:59pm on Sunday 20th March 2022.