

# Council Tax

## 2025/26



Also includes the spending plans for:



**OPCC**

Office of the Police &  
Crime Commissioner  
for Gloucestershire

[www.gloucestershire.gov.uk](http://www.gloucestershire.gov.uk)



**Gloucestershire**  
COUNTY COUNCIL

# Our spending plans 2025/26

**This council will continue to deliver for you next year with an ambitious budget that will see us invest over £665 million in services and projects across Gloucestershire.**

Unlike many of our neighbours who are making cuts, Gloucestershire County Council's budget sees us able to invest in critical areas. Due to some strong financial management over recent years, I am pleased to say that we remain financially stable and that our spending plans for next year include a net increase of £48.2 million compared to last year.

This means that we can continue to be ambitious in our plans for the years ahead, which include significant investment in our priority areas of Highways, SEND, Adult Services, Infrastructure, the environment and supporting our rural areas.

This is all on top of what we will have delivered by the end of the current financial year, which include:

- Being on track to resurface or surface dress over 100 roads and filling tens of thousands of potholes as part of our £100 million investment in Gloucestershire roads
- £11.8 million worth of improvements to school buildings, including a new Alternative Provision School in Gloucester
- An additional £23.3 million of investment into protecting our most vulnerable children
- Additional routes for The Robin, our bookable bus service
- A new transport hub at Arle Court and a 1,000-space park and ride
- Linking Gloucester and Cheltenham with our high-quality cycle spine.

Our budget proposes raising £20.3 million to help fund services through a council tax increase of 2.99 per cent. We would raise £7.9 million specifically to support work with the most vulnerable adults in the county through a further 2 per cent increase in the adult social care precept.

Despite this increase the council still expects to have one of the lowest council tax levels of any county council. Based on a band D property, residents would pay an additional £6.65 each month.

We are continuing to challenge ourselves on how we can work more effectively and as a result have identified £24.5 million in savings, additional income and efficiencies for next year.

Our 2025/26 budget will see us invest further into our county to deliver for our residents and businesses, both for now and for the future of Gloucestershire.



A handwritten signature in black ink that reads "Stephen Davies".

**Councillor Stephen Davies**  
Leader of Gloucestershire County Council

# Some of the essential services and schemes your money helps to deliver



**£7.5m**

in 2025/26 towards the construction of three new adult care homes, with further investment over the coming years



An ongoing £10m fund towards our

**£100m**

4-year commitment to go on improving Gloucestershire's roads, with a greater focus on tackling rural roads



Continuing a four-year programme to increase the number of on-street Electric Vehicle charging points to around

**1,000**

and working with bus operators to get electric buses operating across the network



Planting our **500,000th** tree and continuing to find locations across the county for more



**£2.1m**

extra towards supporting young people with SEND and their families



**£48.9m**

to continue delivery of the major infrastructure around M5 J10, helping to bring jobs and housing to the area



**£1.3m**

to make improvements to our Household Waste Recycling Centres



**£22.2m**

towards increasing capacity and improving school buildings and facilities of schools across the county, including

**£12.8m**

towards a new 200 place special school



# Ever thought about becoming a firefighter?

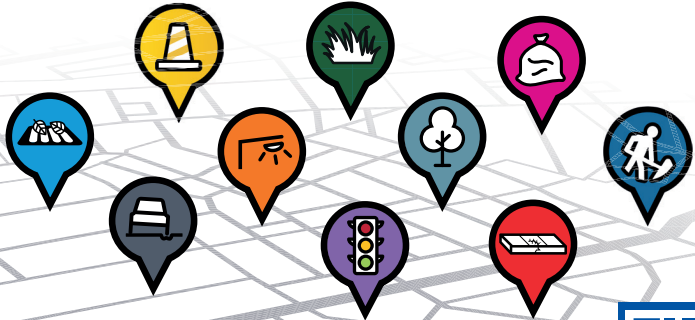
We need on-call firefighters across the county

- ▶ Do you live near a station or work from home?
- ▶ Do you care about your community and want to make a difference?
- ▶ Would you be willing to be 'on-call' should we need you to attend an emergency?

If you're looking for a new challenge and want to make a difference, visit [www.glosfire.gov.uk](http://www.glosfire.gov.uk) or scan the QR code.



# Report it *with* **Fix My Street**



**From blocked drains and overgrown hedges, to potholes, pavements and streetlights, all kinds of issues can be reported online.**



Download the app **FixMyStreet** or visit [www.gloucestershire.gov.uk/FixMyStreet](http://www.gloucestershire.gov.uk/FixMyStreet)

# The cost of fighting crime

The Government is contributing just over half of the £168m it will cost to police Gloucestershire over the next 12 months. While it is true that £88m is £4.5m more than last year, the remaining £80m the Chief Constable needs, will come through your council tax.



That 53% of police funding comes from the Home Office, and 47% from local taxation, is because Governments have not changed the outdated formula used to allocate grant funding. I have campaigned to stop smaller forces like Gloucestershire losing out, and stop 'rewarding' high crime urban areas at the expense of rural forces like ours. But this has again fallen on deaf ears.

That is why I have been left with no alternative than to take the decision to increase council tax by 4.5%, the equivalent of adding £14, or 27p per week, to the annual bill for a band D property, taking it to £322.

Many other forces around the country are in a similar situation and, like them, we've been working hard for some time to find ways in which the Constabulary can make savings. While they, and my office, have made many, we're now running out of options. But rest assured that you can still expect to see officers out on patrol and should you be a victim of crime, the police will still be there for you.

A handwritten signature in black ink that reads "Chris Nelson".

**Chris Nelson**  
**Gloucestershire Police and Crime Commissioner**



**OPCC**  
Office of the Police &  
Crime Commissioner  
for Gloucestershire  
*Chris Nelson*

# A typical day's incoming demand



# Where does the money go?

| Expenditure                        | £000           |
|------------------------------------|----------------|
| Police officers                    | 94,407         |
| PCSOs                              | 5,855          |
| Police Staff                       | 39,535         |
| Other running costs                | 41,392         |
| Capital Financing                  | 3,472          |
| Office of the PCC                  | 2,052          |
| Supporting victims and communities | 1,369          |
| <b>Total Expenditure</b>           | <b>188,082</b> |
| Interest and other income          | (10,021)       |
| Specific grants                    | (7,427)        |
| Contribution from reserves         | (2,247)        |
| <b>Net Expenditure</b>             | <b>168,387</b> |

## Funded by

| Net Budget Requirement Funded by: | £000           |
|-----------------------------------|----------------|
| Government Grant                  | 88,169         |
| Collection fund surplus           | 640            |
| Council Tax Precept               | 79,578         |
| <b>Total Funding</b>              | <b>168,387</b> |

## Precept increases

| Band           | A       | B       | C       | D       | E       | F       | G       | H       |
|----------------|---------|---------|---------|---------|---------|---------|---------|---------|
| 2024/25 charge | £205.39 | £239.62 | £273.85 | £308.08 | £376.54 | £445.00 | £513.47 | £616.16 |
| Increase       | £9.33   | £10.89  | £12.44  | £14.00  | £17.11  | £20.23  | £23.33  | £28.00  |
| 2025/26 charge | £214.72 | £250.51 | £286.29 | £322.08 | £393.65 | £465.23 | £536.80 | £644.16 |



## **The Police and Crime Commissioner**

Phone: 01452 754348 • Email: [PCC@gloucestershire-pcc.gov.uk](mailto:PCC@gloucestershire-pcc.gov.uk)

Website: [www.gloucestershire-pcc.gov.uk](http://www.gloucestershire-pcc.gov.uk)

## **Gloucestershire Constabulary**

Phone: 101 for non-emergency calls • 999 for emergencies

Website: [www.gloucestershire.police.uk](http://www.gloucestershire.police.uk) (you can now report some crimes online –[www.gloucestershire.police.uk/ro/report/ocr/af/how-to-report-a-crime/](http://www.gloucestershire.police.uk/ro/report/ocr/af/how-to-report-a-crime/))

## **Forest of Dean & Gloucester Local Policing Area**

### **T/Superintendent Rob Lawton**

Location: Waterwells, Quedgeley  
Email: [Robert.Lawton@gloucestershire.police.uk](mailto:Robert.Lawton@gloucestershire.police.uk)

## **Cheltenham & Tewkesbury Local Policing Area**

### **Superintendent Emma Macdonald**

Location: Cheltenham Police Station  
Email: [Emma.Macdonald2@gloucestershire.police.uk](mailto:Emma.Macdonald2@gloucestershire.police.uk)

## **Cotswolds & Stroud Local Policing Area Superintendent Matthew Tite**

Location: Stroud Police Station  
Email: [Matthew.Tite@gloucestershire.police.uk](mailto:Matthew.Tite@gloucestershire.police.uk)

## **Your Community Alerts**

Receive community updates from your local policing team so you know exactly what's going on in your area.  
Sign up for free at [www.yourcommunityalerts.co.uk](http://www.yourcommunityalerts.co.uk)

Phone **101** for non-emergencies and **999** for emergencies.  
Report non-emergency crime or to find advice and information visit [www.gloucestershire.police.uk](http://www.gloucestershire.police.uk)

*All details are correct and up to date at time of publication.*



**Gloucestershire Constabulary**



**OPCC**  
Office of the Police & Crime Commissioner  
for Gloucestershire