

Your service

2020/21

Dear resident,

We want to make the most of everything that Gloucestershire has to offer. To us, this means improving the quality of life for every community, supporting businesses to be successful and ensuring the county is a place where people enjoy living, working and visiting.

This year our council tax is one of the lowest in England for a county council for a band D property. The small increases will go towards providing essential services in schools, roads, social care, recycling, waste disposal and supporting the economy.

Other priorities include supporting vulnerable people, tackling climate change, and becoming part of the 'Great Western Gateway'. This is a regional powerhouse that brings together councils and businesses from the South West and Wales to attract investment, development and growth into the area.

Last year we joined many other councils and public bodies in declaring a climate change emergency. We have already made good progress in this area and have cut our own CO2 emissions by 70% since 2006/07.

We're also in the process of investing in over 200 electrical vehicle charging points - on street and in car parks.

We want to do more and we are aiming to be a carbon neutral council by 2030 and will be supporting the county to become carbon neutral by 2050.

We have already agreed a series of actions including a £1million fund to tackle the effects of climate change. Alongside this we are supporting and promoting the planting of a million trees across the county by 2030. But we won't be able to tackle climate change on our own. We will need to support and show leadership to the whole county and we are working hard to deliver this.

Yours faithfully



A stylized, handwritten signature in white ink, appearing to be 'M Hawthorne'.

Councillor Mark Hawthorne
Leader of Gloucestershire County Council

What we do with your money



Less than

£1

extra per week for the average Band D taxpayer

£157m

capital investment in schools by 2023 (£74m forecast for this year)



£3.1m

to deliver Broadband across the county

An additional

£13m

going towards protecting the county's vulnerable children



£10.55m

of savings



£1m

investment into flood alleviation schemes over 4 years



£1.5m

to ensure our firefighters have new and improved life saving equipment



£150m

in 'Your Highways' programme over 3 years

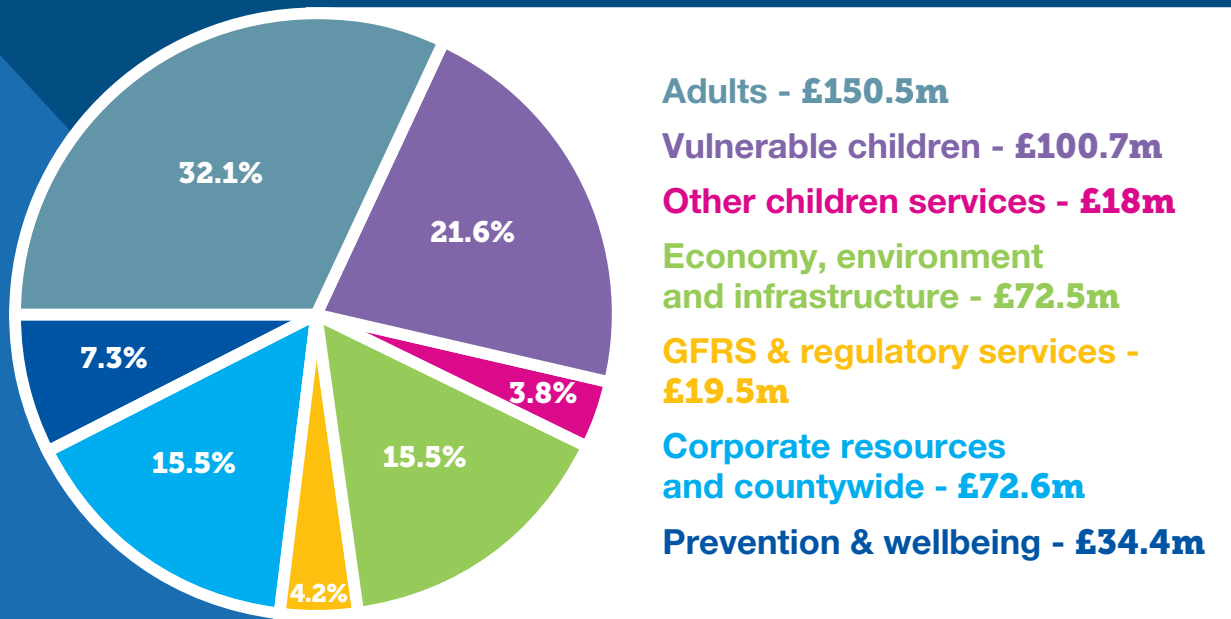
One of the

lowest council tax levels

amongst county councils

How our budget is broken down

Our overall budget is £468.2m – this goes towards providing essential services.



* All figures correct at time of going to print

Foster for
Gloucestershire
County Council

Change the life of a local child



Models have been used in these photos

Gloucestershire County Council is looking for local people to foster Gloucestershire children of all ages.

If you are over 21 and have a spare room, we'd love to hear from you. In return you can expect excellent support, training and weekly allowances and fees.

If you'd like to find out more, ring our friendly Fostering Recruitment Team or chat to us at one of the events advertised on our website.

01242 532654
www.gloucestershire.gov.uk/fostering

 Gloucestershire Fostering

 @FosteringGlos

